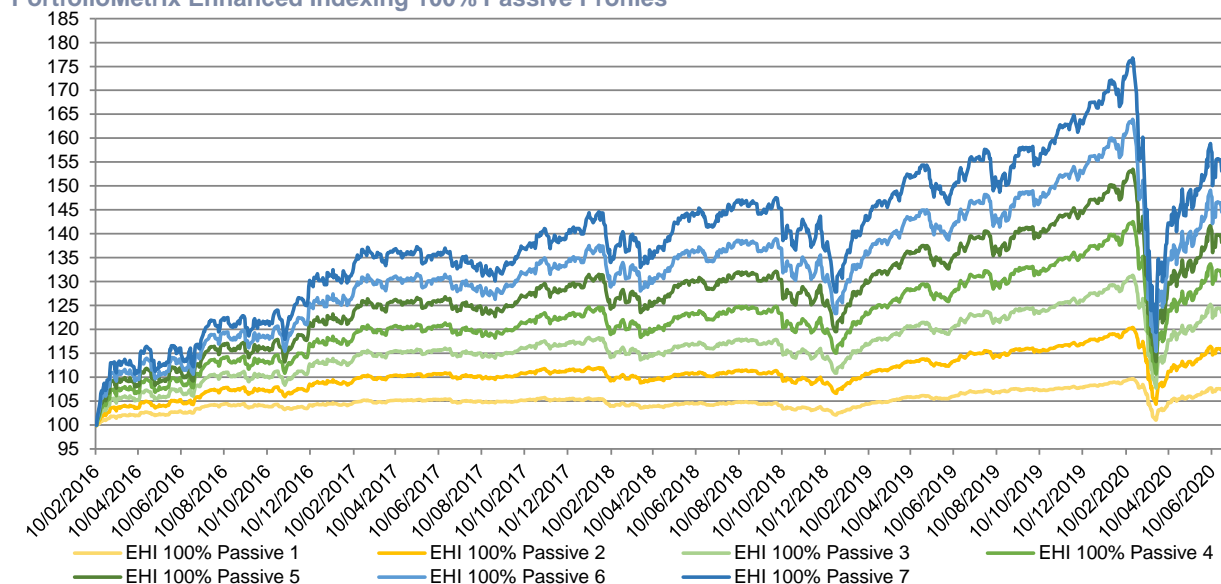


PortfolioMetrix, Enhanced Indexing 100% Passive Approach

PortfolioMetrix Enhanced Indexing 100% Passive Profiles



Source: PortfolioMetrix
 Methodology: Compounded daily total returns, net of asset management fees (inc. fund fees, and PMX fees at 0.55%)
 Portfolios: Investable model portfolios*, based on the PortfolioMetrix enhanced indexing, 100% passive tilt approach
 Performance shown since inception - 11/02/2016 (when the 1st Irish client invested)

PortfolioMetrix Enhanced Indexing 100% Passive Profiles

Profile Name (Equivalent Portfolio Risk Score)	Risk	Cumulative Return	Annualised Return
EHI 100% Passive 1 (PRS 1)	3.10%	7.48%	1.66%
EHI 100% Passive 2 (PRS 18)	5.41%	15.67%	3.38%
EHI 100% Passive 3 (PRS 33)	7.61%	23.98%	5.02%
EHI 100% Passive 4 (PRS 48)	9.80%	31.72%	6.48%
EHI 100% Passive 5 (PRS 63)	11.86%	38.97%	7.79%
EHI 100% Passive 6 (PRS 78)	13.89%	45.60%	8.94%
EHI 100% Passive 7 (PRS 100)	16.05%	54.52%	10.43%

Risk measured as the annualised standard deviation of the weekly total return, 11/02/2016 to 30/06/2020

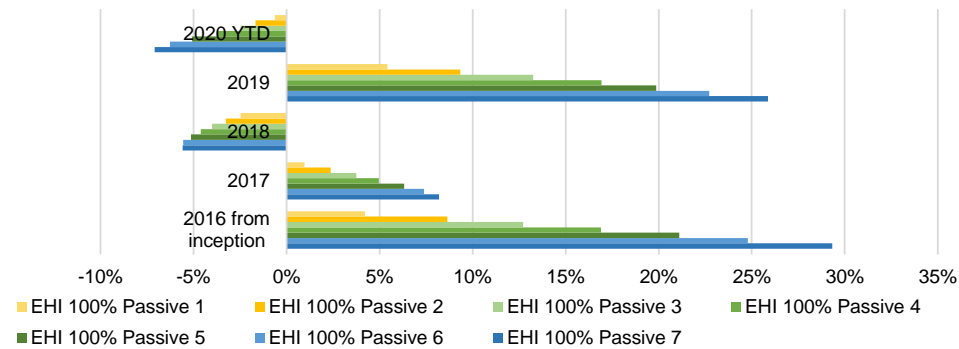
* Models are based on prospectively defined, fully investable targeted risk profiles drawn from a continuum of strategies based on the PM standard, 100% passive tilt approach. Actual investors for whom this approach is suitable are invested across the risk-spectrum according to their specific requirements and not necessarily in the profiles above. Performance reflects the returns of these profiles using fund share classes available on the Conexim platform after all asset management fees (fund TERs, the PortfolioMetrix fee as well as an estimate of the fund bid/offer spreads and anti-dilution levies) and assuming fund buys and sales occur on the same day, but does not include advice or platform fees. Returns for clients will depend on their actual platform choice as well as actual model portfolio characteristics including risk target and passive/active tilt preference.

Warning: Past performance is not a reliable indicator of future performance.
Warning: The value of your investments, and any income from them, may go down as well as up and you may lose some or all of the money you invest.

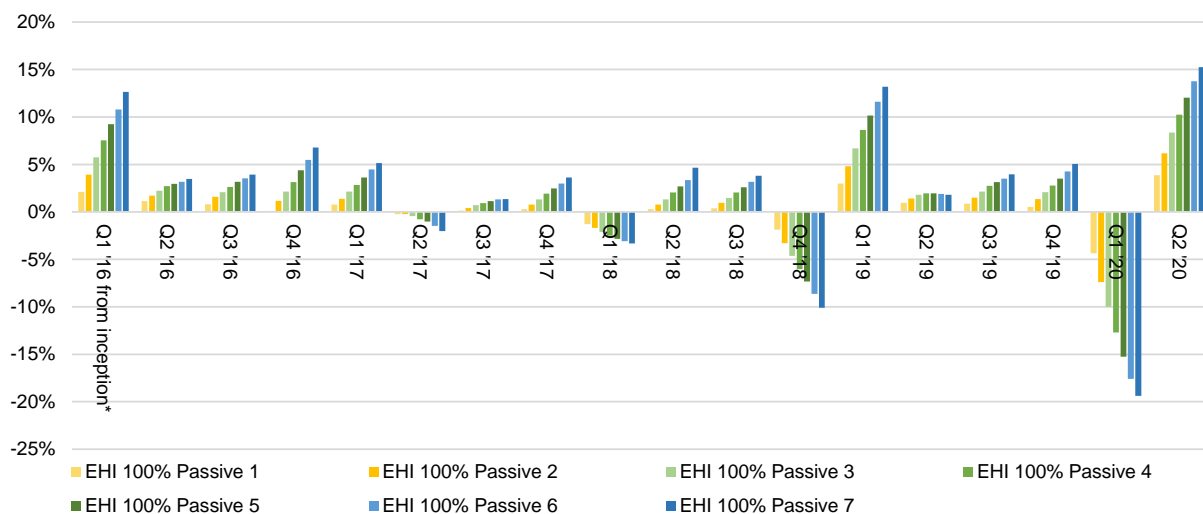
This document is only for professional financial advisers, their clients and their prospective clients. The information given here is for information purposes only and is not intended to constitute financial, legal, tax, investment or other professional advice. It should not be relied upon as such and PortfolioMetrix cannot accept any liability for loss for doing so. Any forecasts, expected future returns or expected future volatilities are not guaranteed and should not be relied upon. **The value of investments, and the income from them, can go down as well as up, and you may not recover the amount of your original investment. Past performance is not a reliable indicator of future performance.** Portfolio holdings and asset allocation can change at any time without notice. PortfolioMetrix Asset Management Ltd is authorised and regulated in the United Kingdom by the Financial Conduct Authority and in Ireland by the Central Bank of Ireland for the Conduct of Business Rules. Full calculation methodology available on request.

PortfolioMetrix - Periodic Performance

PortfolioMetrix Enhanced Indexing 100% Passive Profiles



	Profile 1	Profile 2	Profile 3	Profile 4	Profile 5	Profile 6	Profile 7
3 Month	3.87%	5.99%	8.11%	9.96%	11.71%	13.41%	14.85%
6 Month	-0.64%	-2.30%	-3.56%	-5.17%	-6.80%	-8.33%	-9.62%
1 Year	0.74%	0.36%	0.30%	-0.18%	-0.89%	-1.53%	-1.81%
2 Year	3.17%	3.72%	4.78%	5.09%	4.69%	4.20%	3.90%
3 Year	2.56%	3.92%	6.03%	7.52%	8.23%	8.89%	10.37%
Since Inception	7.73%	14.89%	22.44%	29.49%	36.01%	41.73%	49.28%



* Figures are generated from inception (11/02/2016) to end Q1 2016

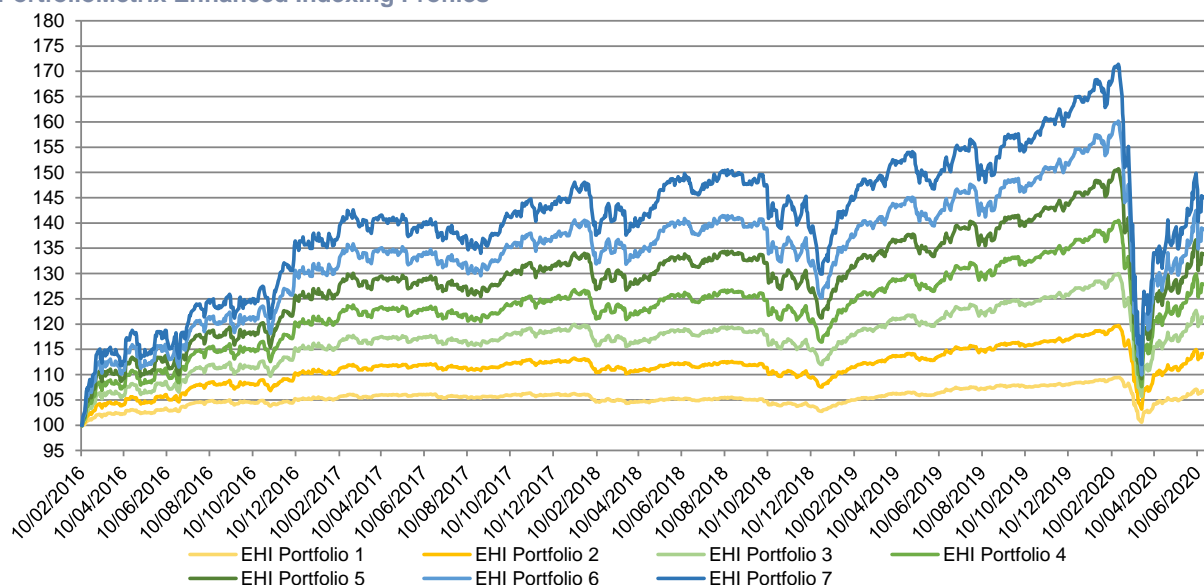
Warning: Past performance is not a reliable indicator of future performance.

Warning: The value of your investments, and any income from them, may go down as well as up and you may lose some or all of the money you invest.

This document is only for professional financial advisers, their clients and their prospective clients. The information given here is for information purposes only and is not intended to constitute financial, legal, tax, investment or other professional advice. It should not be relied upon as such and PortfolioMetrix cannot accept any liability for loss for doing so. Any forecasts, expected future returns or expected future volatilities are not guaranteed and should not be relied upon. **The value of investments, and the income from them, can go down as well as up, and you may not recover the amount of your original investment. Past performance is not a reliable indicator of future performance.** Portfolio holdings and asset allocation can change at any time without notice. PortfolioMetrix Asset Management Ltd is authorised and regulated in the United Kingdom by the Financial Conduct Authority and in Ireland by the Central Bank of Ireland for the Conduct of Business Rules. Full calculation methodology available on request.

PortfolioMetrix, Enhanced Indexing Approach

PortfolioMetrix Enhanced Indexing Profiles



Source: PortfolioMetrix
 Methodology: Compounded daily total returns, net of asset management fees (inc. fund fees, and PMX fees at 0.55%)
 Portfolios: Investable model portfolios*, based on the PortfolioMetrix enhanced indexing, no-tilt approach
 Performance shown since inception, 11/02/2016 (when the 1st Irish client invested)

PortfolioMetrix Enhanced Indexing Profiles

Profile Name (Equivalent Portfolio Risk Score)	Risk	Cumulative Return	Annualised Return
EHI Portfolio 1 (PRS 1)	3.17%	6.64%	1.48%
EHI Portfolio 2 (PRS 18)	5.58%	13.86%	3.00%
EHI Portfolio 3 (PRS 33)	7.87%	20.88%	4.42%
EHI Portfolio 4 (PRS 48)	10.15%	27.21%	5.64%
EHI Portfolio 5 (PRS 63)	12.33%	33.00%	6.72%
EHI Portfolio 6 (PRS 78)	14.48%	37.78%	7.58%
EHI Portfolio 7 (PRS 100)	16.76%	43.94%	8.66%

Risk measured as the annualised standard deviation of the weekly total return, 11/02/2016 to 30/06/2020

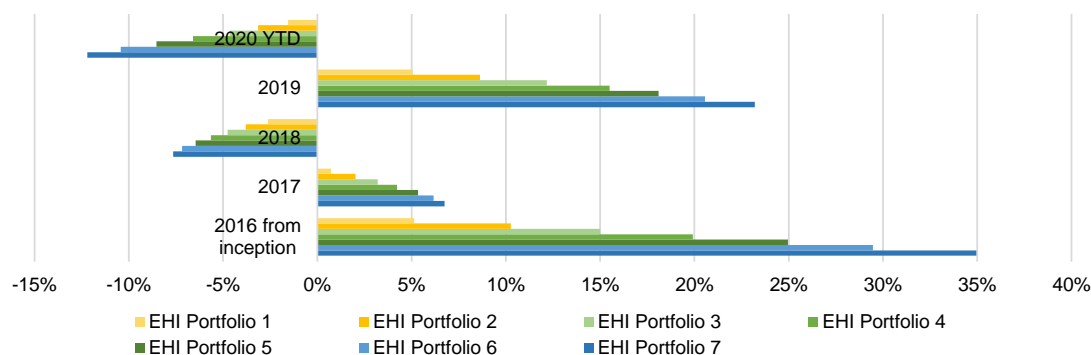
* Models are based on prospectively defined, fully investable targeted risk profiles drawn from a continuum of strategies based on the PMX Enhanced Indexing, No-Tilt approach. Investors for whom this approach is suitable are invested across the risk-spectrum according to their specific requirements and not necessarily in the profiles above. Performance reflects the returns of these profiles using fund share classes available on the Conexim platform after all asset management fees (fund TERs, the PortfolioMetrix fee as well as an estimate of fund bid/offer spreads and anti-dilution levies) and assuming fund buys and sales occur on the same day, but does not include advice or platform fees. Returns for clients will depend on their actual platform choice as well as actual model portfolio characteristics including risk target and passive/active tilt preference.

Warning: Past performance is not a reliable indicator of future performance.
Warning: The value of your investments, and any income from them, may go down as well as up and you may lose some or all of the money you invest.

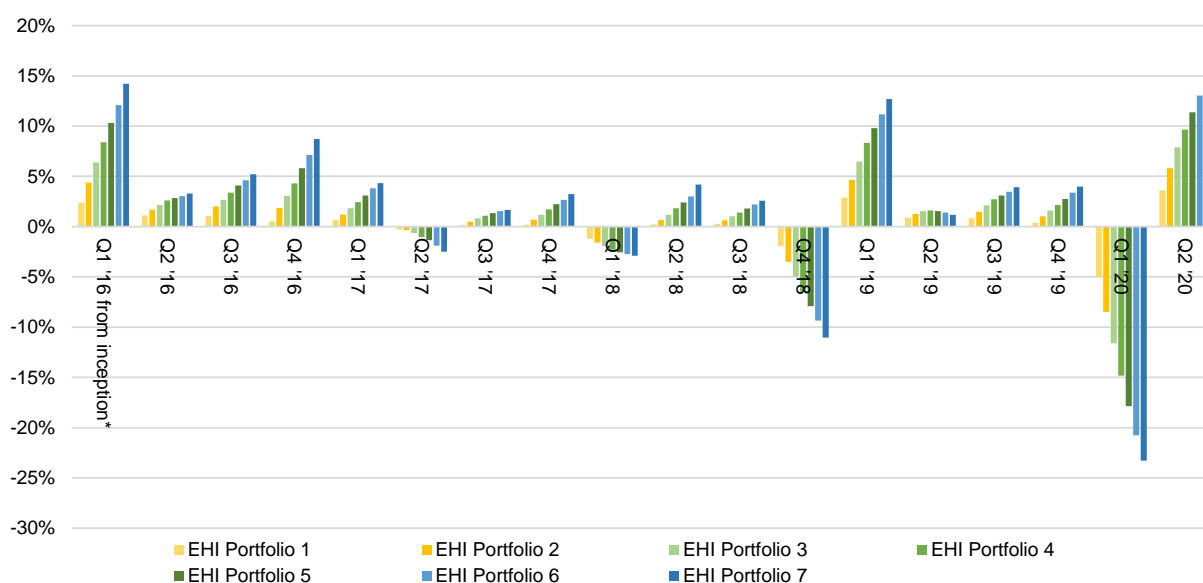
This document is only for professional financial advisers, their clients and their prospective clients. The information given here is for information purposes only and is not intended to constitute financial, legal, tax, investment or other professional advice. It should not be relied upon as such and PortfolioMetrix cannot accept any liability for loss for doing so. Any forecasts, expected future returns or expected future volatilities are not guaranteed and should not be relied upon. **The value of investments, and the income from them, can go down as well as up, and you may not recover the amount of your original investment. Past performance is not a reliable indicator of future performance.** Portfolio holdings and asset allocation can change at any time without notice. PortfolioMetrix Asset Management Ltd is authorised and regulated in the United Kingdom by the Financial Conduct Authority and in Ireland by the Central Bank of Ireland for the Conduct of Business Rules. Full calculation methodology available on request.

PortfolioMetrix - Periodic Performance

PortfolioMetrix Enhanced Indexing Profiles



	Profile 1	Profile 2	Profile 3	Profile 4	Profile 5	Profile 6	Profile 7
3 Month	3.62%	5.83%	7.87%	9.66%	11.37%	13.03%	14.43%
6 Month	-1.55%	-3.14%	-4.66%	-6.60%	-8.54%	-10.44%	-12.20%
1 Year	-0.38%	-0.71%	-1.08%	-2.00%	-3.11%	-4.22%	-5.13%
2 Year	1.69%	2.15%	2.68%	2.29%	1.25%	0.03%	-1.26%
3 Year	1.05%	2.39%	3.90%	4.65%	4.65%	4.50%	4.86%
Since Inception	6.64%	13.86%	20.88%	27.21%	33.00%	37.78%	43.94%



* Figures are generated from inception (11/02/2016) to end Q1 2016

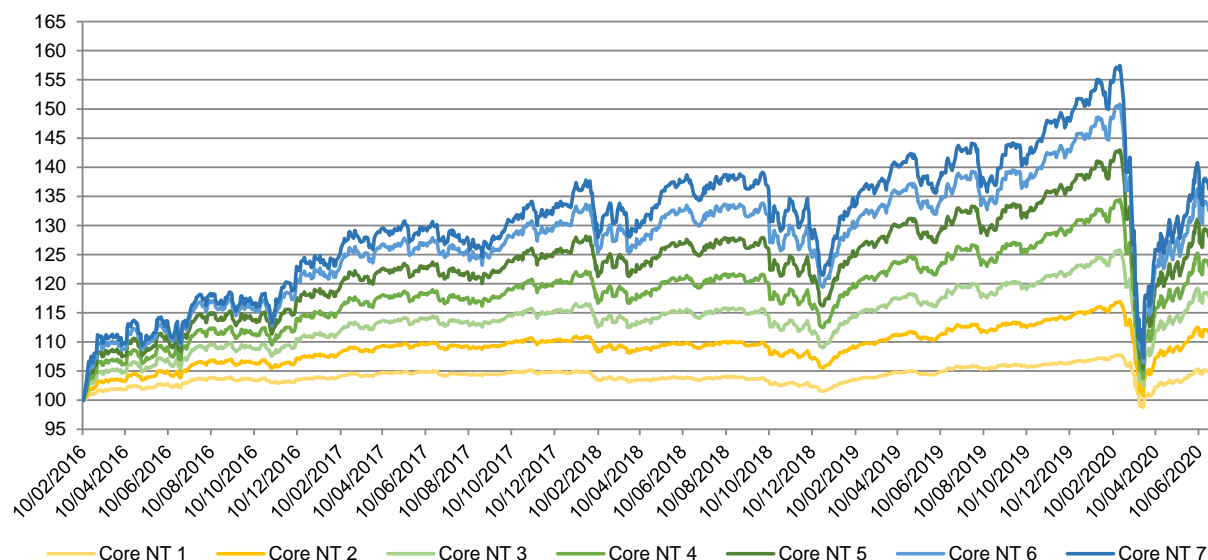
Warning: Past performance is not a reliable indicator of future performance.

Warning: The value of your investments, and any income from them, may go down as well as up and you may lose some or all of the money you invest.

This document is only for professional financial advisers, their clients and their prospective clients. The information given here is for information purposes only and is not intended to constitute financial, legal, tax, investment or other professional advice. It should not be relied upon as such and PortfolioMetrix cannot accept any liability for loss for doing so. Any forecasts, expected future returns or expected future volatilities are not guaranteed and should not be relied upon. **The value of investments, and the income from them, can go down as well as up, and you may not recover the amount of your original investment. Past performance is not a reliable indicator of future performance.** Portfolio holdings and asset allocation can change at any time without notice. PortfolioMetrix Asset Management Ltd is authorised and regulated in the United Kingdom by the Financial Conduct Authority and in Ireland by the Central Bank of Ireland for the Conduct of Business Rules. Full calculation methodology available on request.

PortfolioMetrix, Core Approach

PortfolioMetrix Core Profiles



Source: PortfolioMetrix
 Methodology: Compounded daily total returns, net of asset management fees (inc. fund fees, and PMX fees at 0.55%)
 Portfolios: Investable model portfolios*, based on the PortfolioMetrix core active, no-tilt approach
 Performance shown since inception, 11/02/2016 (when the 1st Irish client invested)

PortfolioMetrix Core Profiles

Profile Name (Equivalent Portfolio Risk Score)	Risk	Cumulative Return	Annualised Return
Core NT 1 (PRS 1)	3.22%	4.90%	1.10%
Core NT 2 (PRS 18)	5.42%	11.62%	2.54%
Core NT 3 (PRS 33)	7.60%	17.78%	3.80%
Core NT 4 (PRS 48)	9.67%	23.03%	4.84%
Core NT 5 (PRS 63)	11.53%	28.08%	5.80%
Core NT 6 (PRS 78)	13.33%	32.51%	6.63%
Core NT 7 (PRS 100)	15.13%	36.20%	7.30%

Risk measured as the annualised standard deviation of the weekly total return, 11/02/2016 to 30/06/2020

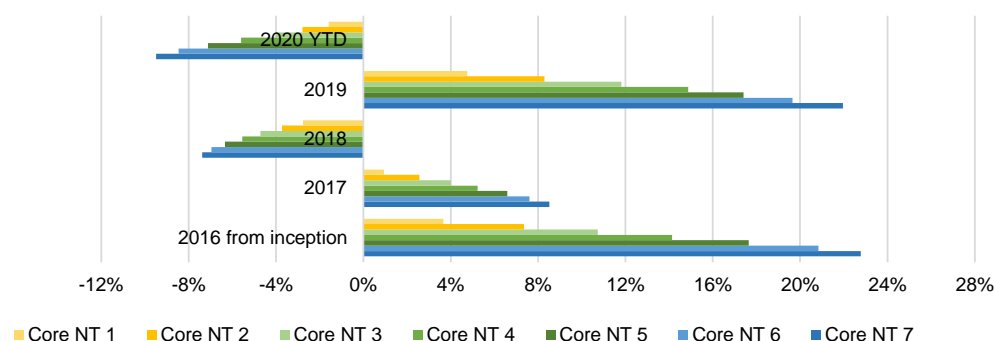
* Models are based on prospectively defined, fully investable targeted risk profiles drawn from a continuum of strategies based on the PMX Core Active, No-Tilt approach. Investors for whom this approach is suitable are invested across the risk-spectrum according to their specific requirements and not necessarily in the profiles above. Performance reflects the returns of these profiles using fund share classes available on the Conexim platform after all asset management fees (fund TERs, the PortfolioMetrix fee as well as an estimate of fund bid/offer spreads and anti-dilution levies) and assuming fund buys and sales occur on the same day, but does not include advice or platform fees. Returns for clients will depend on their actual platform choice as well as actual model portfolio characteristics including risk target and passive/active tilt preference.

Warning: Past performance is not a reliable indicator of future performance.
Warning: The value of your investments, and any income from them, may go down as well as up and you may lose some or all of the money you invest.

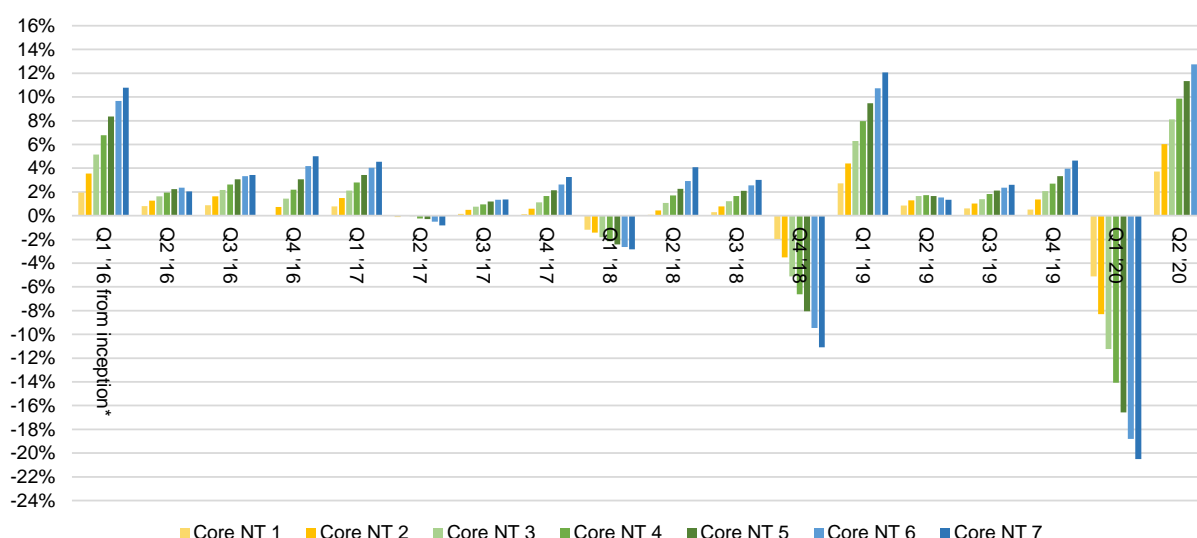
This document is only for professional financial advisers, their clients and their prospective clients. The information given here is for information purposes only and is not intended to constitute financial, legal, tax, investment or other professional advice. It should not be relied upon as such and PortfolioMetrix cannot accept any liability for loss for doing so. Any forecasts, expected future returns or expected future volatilities are not guaranteed and should not be relied upon. **The value of investments, and the income from them, can go down as well as up, and you may not recover the amount of your original investment. Past performance is not a reliable indicator of future performance.** Portfolio holdings and asset allocation can change at any time without notice. PortfolioMetrix Asset Management Ltd is authorised and regulated in the United Kingdom by the Financial Conduct Authority and in Ireland by the Central Bank of Ireland for the Conduct of Business Rules. Full calculation methodology available on request.

PortfolioMetrix - Periodic Performance

PortfolioMetrix Core Profiles



	Profile 1	Profile 2	Profile 3	Profile 4	Profile 5	Profile 6	Profile 7
3 Month	3.71%	6.01%	8.11%	9.86%	11.34%	12.74%	13.87%
6 Month	-1.59%	-2.78%	-4.02%	-5.60%	-7.12%	-8.47%	-9.50%
1 Year	-0.49%	-0.43%	-0.67%	-1.27%	-2.00%	-2.59%	-2.83%
2 Year	1.37%	2.38%	3.06%	2.94%	2.36%	1.70%	1.09%
3 Year	0.54%	2.46%	4.19%	5.12%	5.57%	5.97%	6.99%
Since Inception	4.90%	11.62%	17.78%	23.03%	28.08%	32.51%	36.20%



* Figures are generated from inception (11/02/2016) to end Q1 2016

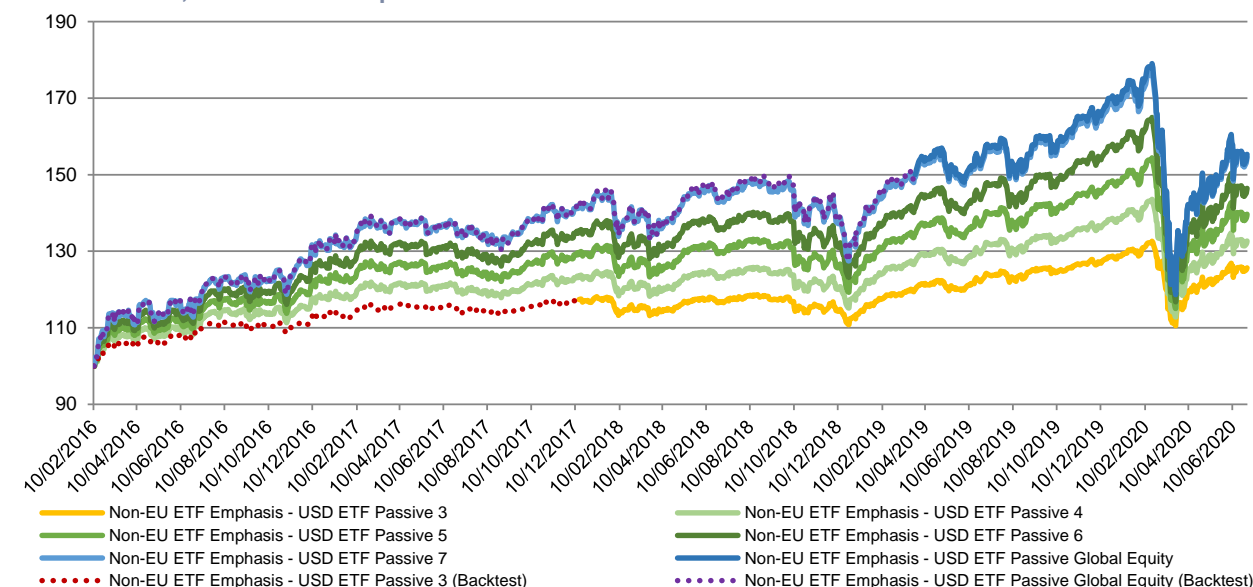
Warning: Past performance is not a reliable indicator of future performance.

Warning: The value of your investments, and any income from them, may go down as well as up and you may lose some or all of the money you invest.

This document is only for professional financial advisers, their clients and their prospective clients. The information given here is for information purposes only and is not intended to constitute financial, legal, tax, investment or other professional advice. It should not be relied upon as such and PortfolioMetrix cannot accept any liability for loss for doing so. Any forecasts, expected future returns or expected future volatilities are not guaranteed and should not be relied upon. **The value of investments, and the income from them, can go down as well as up, and you may not recover the amount of your original investment. Past performance is not a reliable indicator of future performance.** Portfolio holdings and asset allocation can change at any time without notice. PortfolioMetrix Asset Management Ltd is authorised and regulated in the United Kingdom by the Financial Conduct Authority and in Ireland by the Central Bank of Ireland for the Conduct of Business Rules. Full calculation methodology available on request.

PortfolioMetrix, Non-EU ETF Emphasis - USD ETF Passive Approach

PortfolioMetrix, Non-EU ETF Emphasis - USD ETF Passive Profiles



PortfolioMetrix, Non-EU ETF Emphasis - USD ETF Passive Profiles

Profile Name (Equivalent Portfolio Risk Score)	Risk	Cumulative Return	Annualised Return
Non-EU ETF Emphasis - USD ETF Passive 3 (PRS 33)	7.76%	25.65%	5.34%
Non-EU ETF Emphasis - USD ETF Passive 4 (PRS 48)	10.07%	32.68%	6.66%
Non-EU ETF Emphasis - USD ETF Passive 5 (PRS 63)	12.29%	39.68%	7.92%
Non-EU ETF Emphasis - USD ETF Passive 6 (PRS 78)	14.44%	46.42%	9.08%
Non-EU ETF Emphasis - USD ETF Passive 7 (PRS 100)	16.66%	54.53%	10.43%
Non-EU ETF Emphasis - USD ETF Passive Global Equity	17.25%	55.30%	10.56%

Risk measured as the annualised standard deviation of the weekly total return, 11/02/2016 to 30/06/2020

Models are based on prospectively defined, fully investable targeted risk profiles drawn from a continuum of strategies based on the FIM Standard Non-EU ETF Emphasis, USD ETF Passive approach. Actual investors for whom this approach is suitable are invested across the risk-spectrum according to their specific requirements and not necessarily in the profiles above. Performance reflects the returns of these profiles using fund share classes available on the Conexim platform after all asset management fees (fund TERs, the PortfolioMetrix fee as well as an estimate of the fund bid/offer spreads and anti-dilution levies) and assuming fund buys and sales occur on the same day, but does not include advice or platform fees. Returns for clients will depend on their actual platform choice as well as actual model portfolio characteristics including risk target and passive/active tilt preference

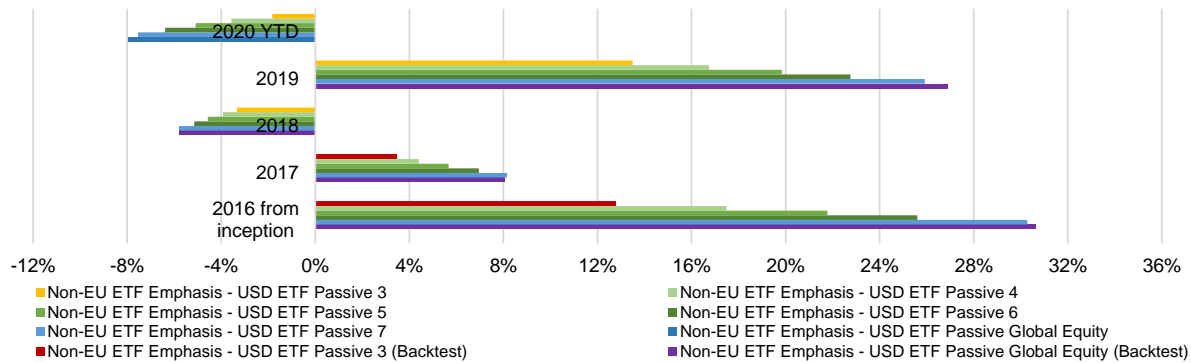
Warning: Past performance is not a reliable indicator of future performance.

Warning: The value of your investments, and any income from them, may go down as well as up and you may lose some or all of the money you invest.

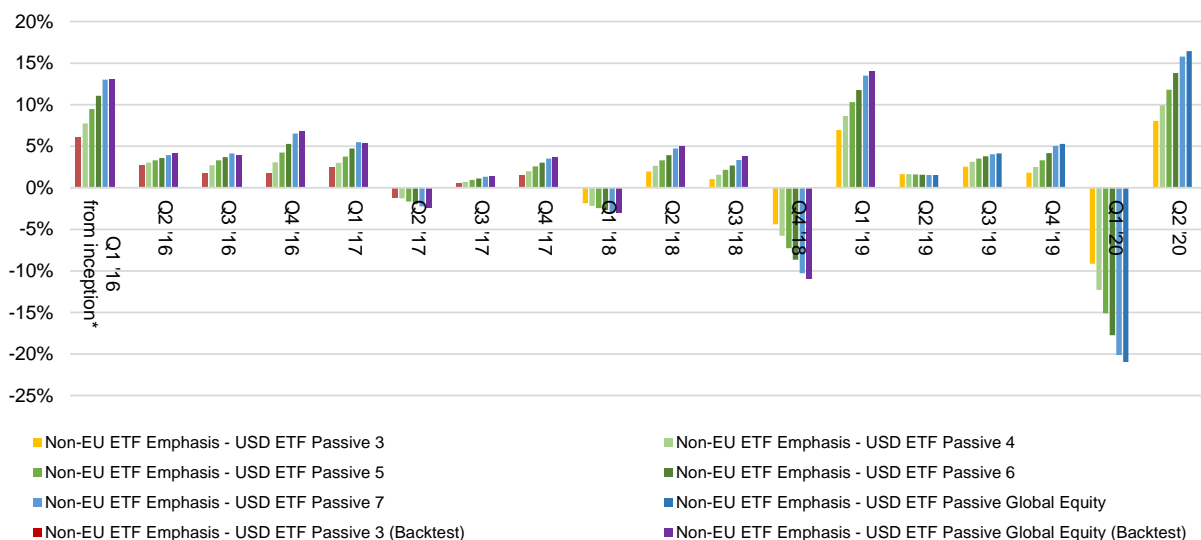
This document is only for professional financial advisers, their clients and their prospective clients. The information given here is for information purposes only and is not intended to constitute financial, legal, tax, investment or other professional advice. It should not be relied upon as such and PortfolioMetrix cannot accept any liability for loss for doing so. Any forecasts, expected future returns or expected future volatilities are not guaranteed and should not be relied upon. **The value of investments, and the income from them, can go down as well as up, and you may not recover the amount of your original investment. Past performance is not a reliable indicator of future performance.** Portfolio holdings and asset allocation can change at any time without notice. PortfolioMetrix Asset Management Ltd is authorised and regulated in the United Kingdom by the Financial Conduct Authority and in Ireland by the Central Bank of Ireland for the Conduct of Business Rules. Full calculation methodology available on request.

PortfolioMetrix - Periodic Performance

PortfolioMetrix, Non-EU ETF Emphasis - USD ETF Passive Profiles



	USD ETF Pass 3	USD ETF Pass 4	USD ETF Pass 5	USD ETF Pass 6	USD ETF Pass 7	USD ETF Pass Gbl Equity
3 Month	8.05%	9.93%	11.80%	13.82%	15.79%	16.45%
6 Month	-1.83%	-3.57%	-5.09%	-6.39%	-7.54%	-7.94%
1 Year	2.51%	1.95%	1.49%	1.23%	1.03%	0.93%
2 Year	7.67%	7.74%	7.72%	7.78%	7.95%	7.98%
Since Inception	25.65%	32.68%	39.68%	46.42%	54.53%	55.30%



* Figures are generated from inception (11/02/2016) to end Q1 2016

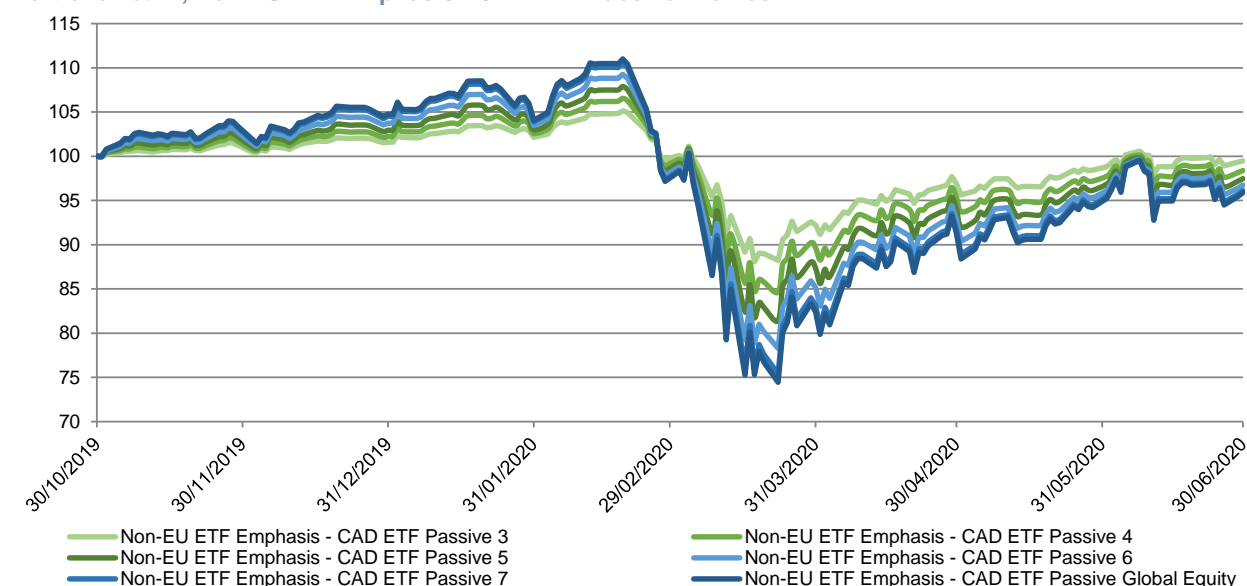
Warning: Past performance is not a reliable indicator of future performance.

Warning: The value of your investments, and any income from them, may go down as well as up and you may lose some or all of the money you invest.

This document is only for professional financial advisers, their clients and their prospective clients. The information given here is for information purposes only and is not intended to constitute financial, legal, tax, investment or other professional advice. It should not be relied upon as such and PortfolioMetrix cannot accept any liability for loss for doing so. Any forecasts, expected future returns or expected future volatilities are not guaranteed and should not be relied upon. **The value of investments, and the income from them, can go down as well as up, and you may not recover the amount of your original investment. Past performance is not a reliable indicator of future performance.** Portfolio holdings and asset allocation can change at any time without notice. PortfolioMetrix Asset Management Ltd is authorised and regulated in the United Kingdom by the Financial Conduct Authority and in Ireland by the Central Bank of Ireland for the Conduct of Business Rules. Full calculation methodology available on request.

PortfolioMetrix, Non-EU ETF Emphasis - CAD ETF Passive Approach

PortfolioMetrix, Non-EU ETF Emphasis - CAD ETF Passive Profiles



PortfolioMetrix, Non-EU ETF Emphasis - CAD ETF Passive Profiles

Profile Name (Equivalent Portfolio Risk Score)	Risk	Cumulative Return	Annualised Return
Non-EU ETF Emphasis - CAD ETF Passive 3 (PRS 33)	15.39%	-0.51%	-
Non-EU ETF Emphasis - CAD ETF Passive 4 (PRS 48)	19.90%	-1.62%	-
Non-EU ETF Emphasis - CAD ETF Passive 5 (PRS 63)	24.12%	-2.53%	-
Non-EU ETF Emphasis - CAD ETF Passive 6 (PRS 78)	28.47%	-3.25%	-
Non-EU ETF Emphasis - CAD ETF Passive 7 (PRS 100)	32.67%	-3.88%	-
Non-EU ETF Emphasis - CAD ETF Passive Global Equity	34.11%	-4.12%	-

Risk measured as the annualised standard deviation of the weekly total return, 31/10/2019 to 30/06/2020

* Models are based on prospectively defined, fully investable targeted risk profiles drawn from a continuum of strategies based on the PM Standard Non-EU ETF Emphasis, CAD ETF Passive approach. Actual investors for whom this approach is suitable are invested across the risk-spectrum according to their specific requirements and not necessarily in the profiles above. Performance reflects the returns of these profiles using fund share classes available on the Conexim platform after all asset management fees (fund TERs, the PortfolioMetrix fee as well as an estimate of the fund bid/offer spreads and anti-dilution levies) and assuming fund buys and sales occur on the same day, but does not include advice or platform fees. Returns for clients will depend on their actual platform choice as well as actual model portfolio characteristics including risk target and passive/active tilt preference.

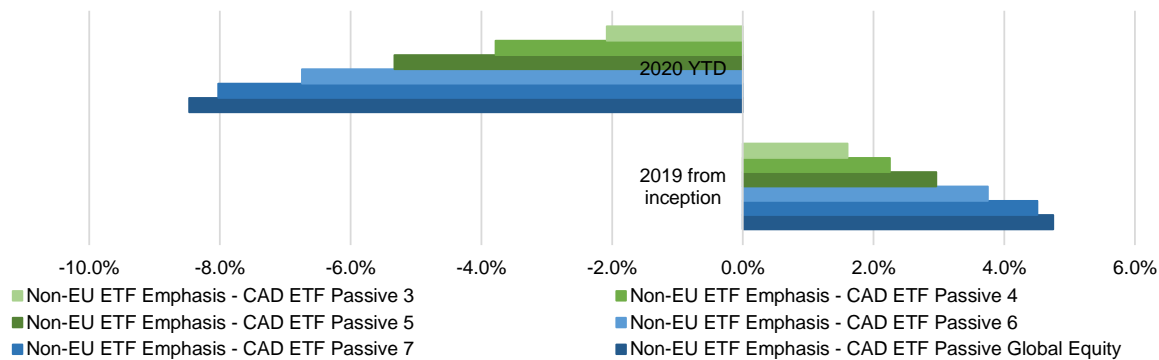
Warning: Past performance is not a reliable indicator of future performance.

Warning: The value of your investments, and any income from them, may go down as well as up and you may lose some or all of the money you invest.

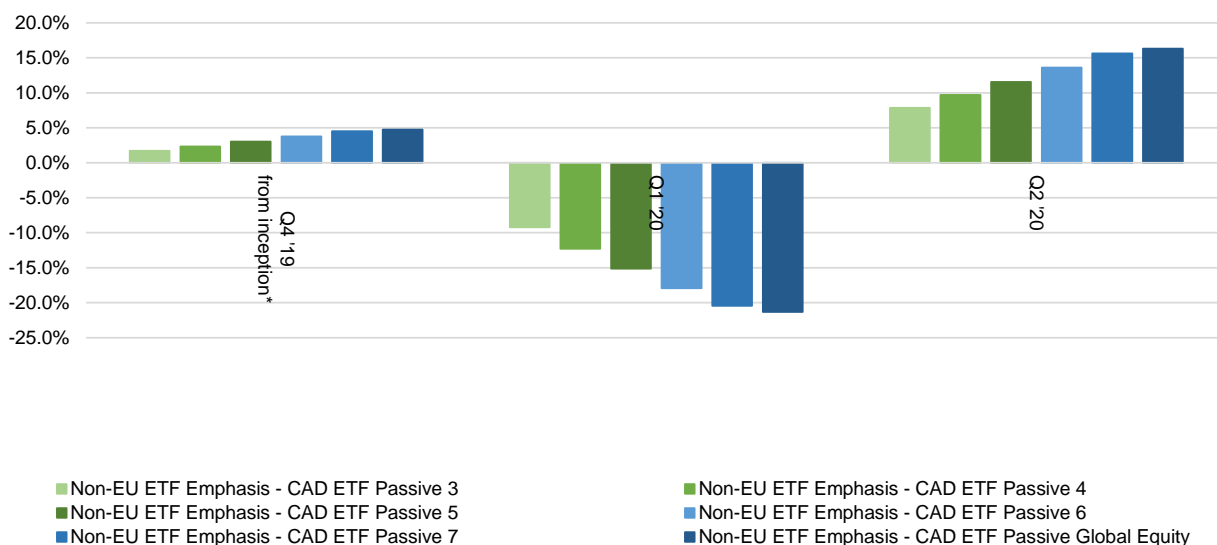
This document is only for professional financial advisers, their clients and their prospective clients. The information given here is for information purposes only and is not intended to constitute financial, legal, tax, investment or other professional advice. It should not be relied upon as such and PortfolioMetrix cannot accept any liability for loss for doing so. Any forecasts, expected future returns or expected future volatilities are not guaranteed and should not be relied upon. **The value of investments, and the income from them, can go down as well as up, and you may not recover the amount of your original investment. Past performance is not a reliable indicator of future performance.** Portfolio holdings and asset allocation can change at any time without notice. PortfolioMetrix Asset Management Ltd is authorised and regulated in the United Kingdom by the Financial Conduct Authority and in Ireland by the Central Bank of Ireland for the Conduct of Business Rules. Full calculation methodology available on request.

PortfolioMetrix - Periodic Performance

PortfolioMetrix, Non-EU ETF Emphasis - CAD ETF Passive Profiles



	CAD ETF Pass 3	CAD ETF Pass 4	CAD ETF Pass 5	CAD ETF Pass 6	CAD ETF Pass 7	CAD ETF Pass Gbl Equity
3 Month	7.85%	9.70%	11.56%	13.60%	15.63%	16.31%
6 Month	-2.08%	-3.78%	-5.33%	-6.75%	-8.03%	-8.47%
1 Year	-	-	-	-	-	-
Since Inception	-0.51%	-1.62%	-2.53%	-3.25%	-3.88%	-4.12%



* Figures are generated from inception (31/10/2019) to end Q4 2019

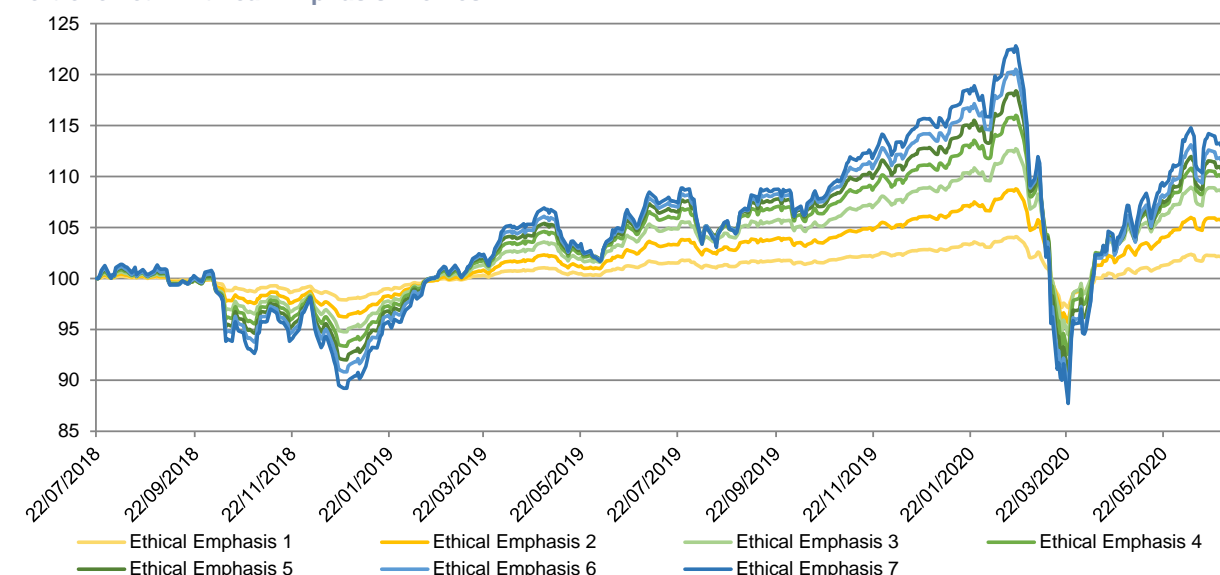
Warning: Past performance is not a reliable indicator of future performance.

Warning: The value of your investments, and any income from them, may go down as well as up and you may lose some or all of the money you invest.

This document is only for professional financial advisers, their clients and their prospective clients. The information given here is for information purposes only and is not intended to constitute financial, legal, tax, investment or other professional advice. It should not be relied upon as such and PortfolioMetrix cannot accept any liability for loss for doing so. Any forecasts, expected future returns or expected future volatilities are not guaranteed and should not be relied upon. **The value of investments, and the income from them, can go down as well as up, and you may not recover the amount of your original investment. Past performance is not a reliable indicator of future performance.** Portfolio holdings and asset allocation can change at any time without notice. PortfolioMetrix Asset Management Ltd is authorised and regulated in the United Kingdom by the Financial Conduct Authority and in Ireland by the Central Bank of Ireland for the Conduct of Business Rules. Full calculation methodology available on request.

PortfolioMetrix, Ethical Emphasis Approach

PortfolioMetrix Ethical Emphasis Profiles



Source: PortfolioMetrix
 Methodology: Compounded daily total returns, net of asset management fees (inc. fund fees, and PMX fees at 0.55%)
 Portfolios: Investable model portfolios*, based on the PortfolioMetrix core active, no-tilt approach
 Performance shown since inception, 23/07/2018 (when the 1st Irish client invested)

PortfolioMetrix Ethical Emphasis Profiles

Profile Name (Equivalent Portfolio Risk Score)	Risk	Cumulative Return	Annualised Return
Ethical Emphasis 1 (PRS 1)	3.42%	2.25%	1.16%
Ethical Emphasis 2 (PRS 18)	6.52%	5.94%	3.02%
Ethical Emphasis 3 (PRS 33)	9.09%	8.89%	4.49%
Ethical Emphasis 4 (PRS 48)	11.70%	10.43%	5.25%
Ethical Emphasis 5 (PRS 63)	13.97%	11.29%	5.67%
Ethical Emphasis 6 (PRS 78)	16.11%	12.23%	6.13%
Ethical Emphasis 7 (PRS 100)	18.40%	13.74%	6.86%

Risk measured as the annualised standard deviation of the weekly total return, 23/07/2018 to 30/06/2020

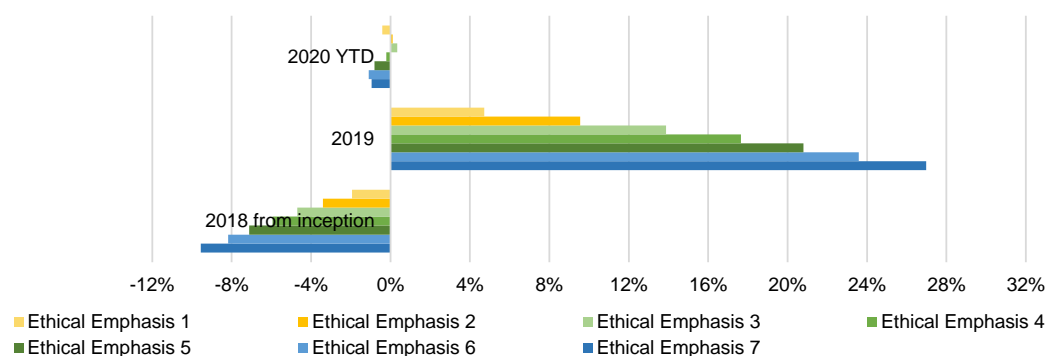
* Models are based on prospectively defined, fully investable targeted risk profiles drawn from a continuum of strategies based on the PMX Core Active, No-Tilt approach. Investors for whom this approach is suitable are invested across the risk-spectrum according to their specific requirements and not necessarily in the profiles above. Performance reflects the returns of these profiles using fund share classes available on the Conexim platform after all asset management fees (fund TERs, the PortfolioMetrix fee as well as an estimate of fund bid/offer spreads and anti-dilution levies) and assuming fund buys and sales occur on the same day, but does not include advice or platform fees. Returns for clients will depend on their actual platform choice as well as actual model portfolio characteristics including risk target and passive/active tilt preference.

Warning: Past performance is not a reliable indicator of future performance.
Warning: The value of your investments, and any income from them, may go down as well as up and you may lose some or all of the money you invest.

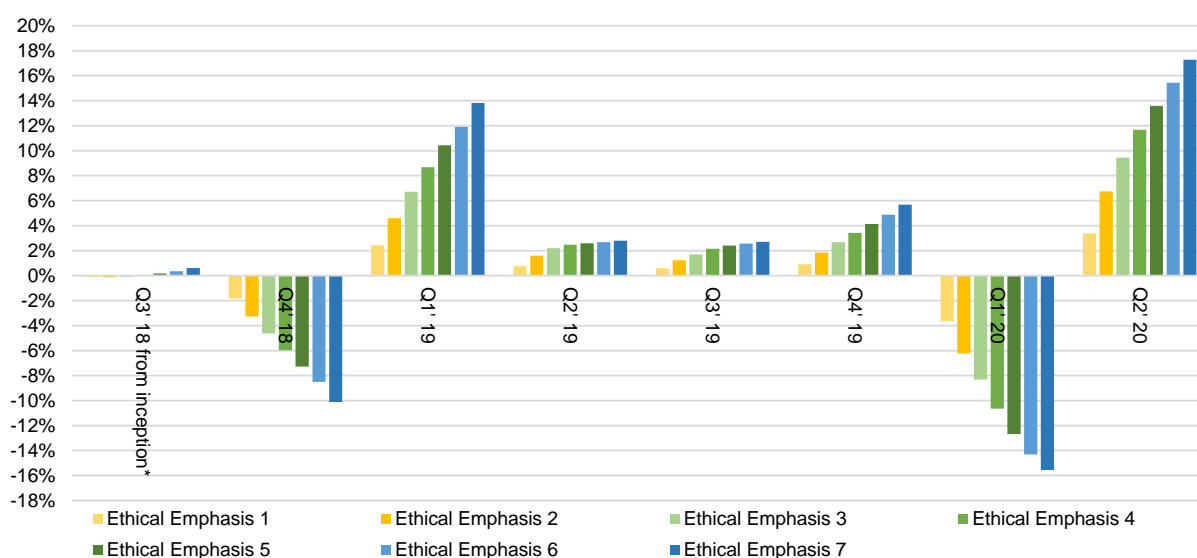
This document is only for professional financial advisers, their clients and their prospective clients. The information given here is for information purposes only and is not intended to constitute financial, legal, tax, investment or other professional advice. It should not be relied upon as such and PortfolioMetrix cannot accept any liability for loss for doing so. Any forecasts, expected future returns or expected future volatilities are not guaranteed and should not be relied upon. **The value of investments, and the income from them, can go down as well as up, and you may not recover the amount of your original investment. Past performance is not a reliable indicator of future performance.** Portfolio holdings and asset allocation can change at any time without notice. PortfolioMetrix Asset Management Ltd is authorised and regulated in the United Kingdom by the Financial Conduct Authority and in Ireland by the Central Bank of Ireland for the Conduct of Business Rules. Full calculation methodology available on request.

PortfolioMetrix - Periodic Performance

PortfolioMetrix Ethical Emphasis Profiles



	Profile 1	Profile 2	Profile 3	Profile 4	Profile 5	Profile 6	Profile 7
3 Month	3.36%	6.75%	9.43%	11.68%	13.59%	15.42%	17.28%
6 Month	-0.42%	0.11%	0.33%	-0.21%	-0.81%	-1.10%	-0.96%
1 Year	1.07%	3.21%	4.76%	5.41%	5.77%	6.36%	7.49%
2 Year	-	-	-	-	-	-	-
3 Year	-	-	-	-	-	-	-
Since Inception	2.25%	5.94%	8.89%	10.43%	11.29%	12.23%	13.74%



* Figures are generated from inception (23/07/2018) to end Q3 2018

Warning: Past performance is not a reliable indicator of future performance.

Warning: The value of your investments, and any income from them, may go down as well as up and you may lose some or all of the money you invest.

This document is only for professional financial advisers, their clients and their prospective clients. The information given here is for information purposes only and is not intended to constitute financial, legal, tax, investment or other professional advice. It should not be relied upon as such and PortfolioMetrix cannot accept any liability for loss for doing so. Any forecasts, expected future returns or expected future volatilities are not guaranteed and should not be relied upon. **The value of investments, and the income from them, can go down as well as up, and you may not recover the amount of your original investment. Past performance is not a reliable indicator of future performance.** Portfolio holdings and asset allocation can change at any time without notice. PortfolioMetrix Asset Management Ltd is authorised and regulated in the United Kingdom by the Financial Conduct Authority and in Ireland by the Central Bank of Ireland for the Conduct of Business Rules. Full calculation methodology available on request.