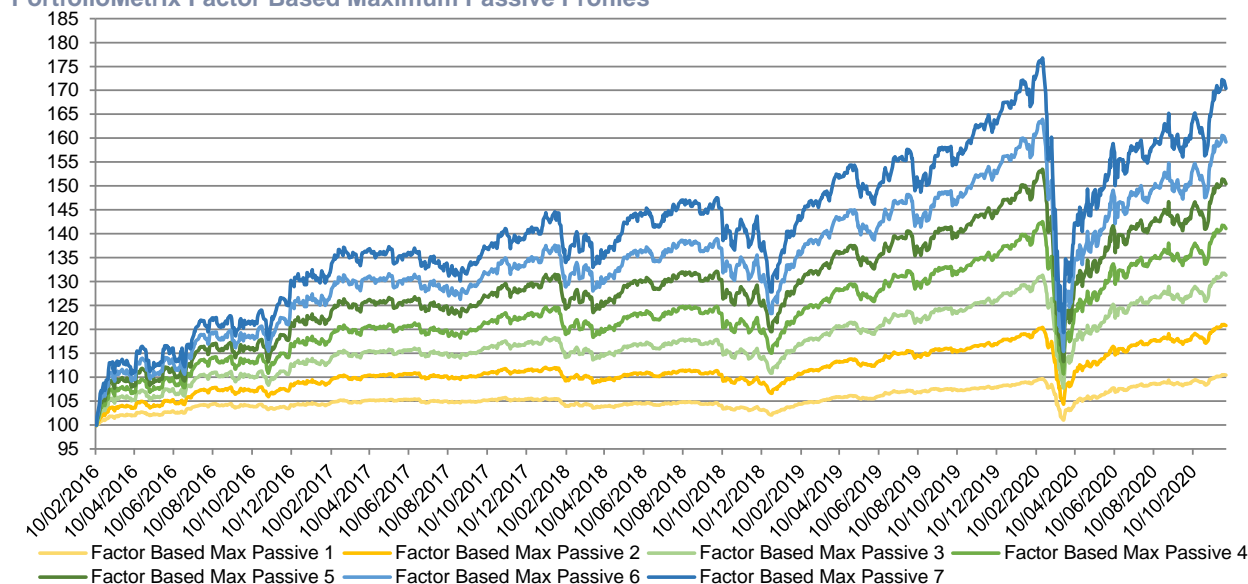


PortfolioMetrix, Factor Based Maximum Passive Approach (Formerly Enhanced Indexing)

PortfolioMetrix Factor Based Maximum Passive Profiles



Source: PortfolioMetrix

Methodology: Compounded daily total returns, net of asset management fees (inc. fund fees, and PMX fees at 0.55%)

Portfolios: Investable model portfolios*, based on the PortfolioMetrix enhanced indexing, maximum passive tilt approach

Performance shown since inception - 11/02/2016 (when the 1st Irish client invested)

PortfolioMetrix Factor Based Maximum Passive Profiles

Profile Name (Equivalent Portfolio Risk Score)	Risk	Cumulative Return	Annualised Return
Factor Based Max Passive 1 (PRS 1)	3.05%	10.45%	2.09%
Factor Based Max Passive 2 (PRS 18)	5.32%	20.80%	4.01%
Factor Based Max Passive 3 (PRS 33)	7.48%	31.35%	5.84%
Factor Based Max Passive 4 (PRS 48)	9.63%	41.09%	7.43%
Factor Based Max Passive 5 (PRS 63)	11.65%	50.44%	8.87%
Factor Based Max Passive 6 (PRS 78)	13.65%	59.19%	10.16%
Factor Based Max Passive 7 (PRS 100)	15.77%	70.37%	11.73%

Risk measured as the annualised standard deviation of the weekly total return, 11/02/2016 to 30/11/2020

* Models are based on prospectively defined, fully investable targeted risk profiles drawn from a continuum of strategies based on the PM standard, maximum passive tilt approach. Actual investors for whom this approach is suitable are invested across the risk-spectrum according to their specific requirements and not necessarily in the profiles above. Performance reflects the returns of these profiles using fund share classes available on the Conexim platform after all asset management fees (fund TERs, the PortfolioMetrix fee as well as an estimate of the fund bid/offer spreads and anti-dilution levies) and assuming fund buys and sales occur on the same day, but does not include advice or platform fees. Returns for clients will depend on their actual platform choice as well as actual model portfolio characteristics including risk target and passive/active tilt preference.

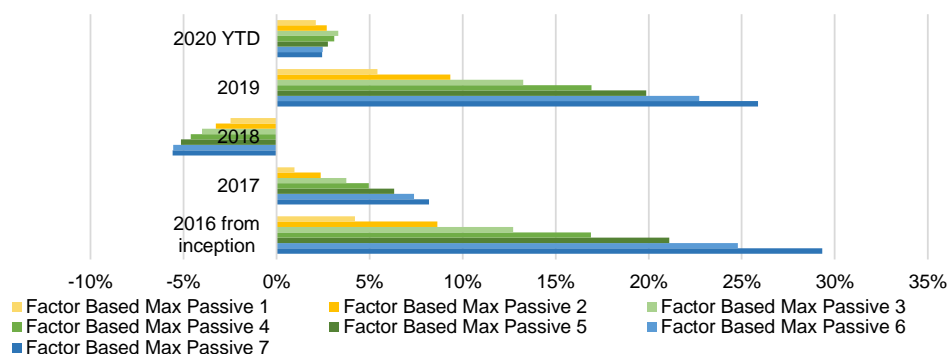
Warning: Past performance is not a reliable indicator of future performance.

Warning: The value of your investments, and any income from them, may go down as well as up and you may lose some or all of the money you invest.

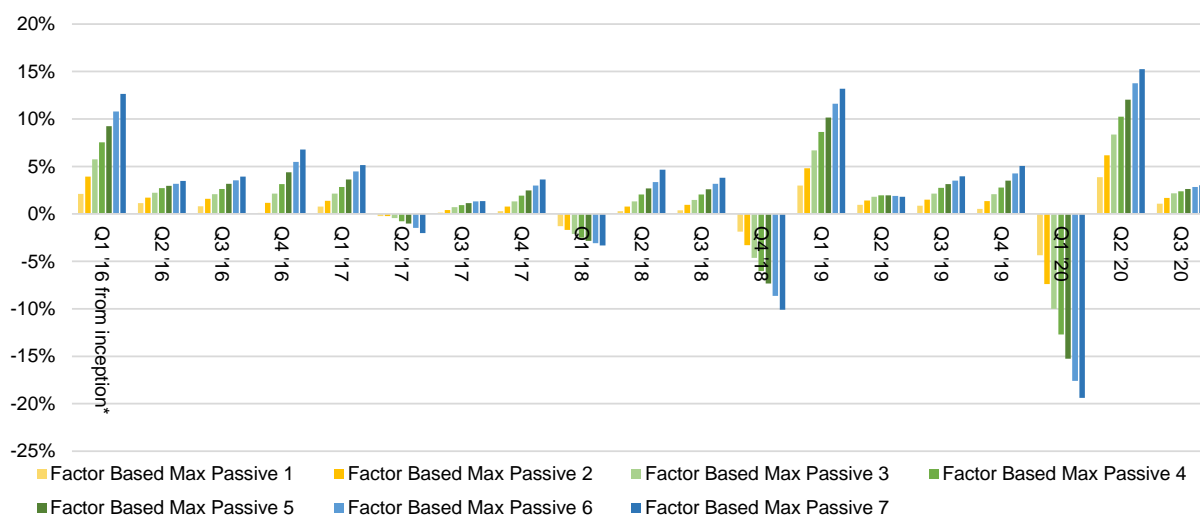
This document is only for professional financial advisers, their clients and their prospective clients. The information given here is for information purposes only and is not intended to constitute financial, legal, tax, investment or other professional advice. It should not be relied upon as such and PortfolioMetrix cannot accept any liability for loss for doing so. Any forecasts, expected future returns or expected future volatilities are not guaranteed and should not be relied upon. **The value of investments, and the income from them, can go down as well as up, and you may not recover the amount of your original investment. Past performance is not a reliable indicator of future performance.** Portfolio holdings and asset allocation can change at any time without notice. PortfolioMetrix Asset Management Ltd is authorised and regulated in the United Kingdom by the Financial Conduct Authority and in Ireland by the Central Bank of Ireland for the Conduct of Business Rules. Full calculation methodology available on request.

PortfolioMetrix - Periodic Performance

PortfolioMetrix Factor Based Maximum Passive Profiles



	Profile 1	Profile 2	Profile 3	Profile 4	Profile 5	Profile 6	Profile 7
3 Month	1.53%	2.34%	3.11%	3.80%	4.42%	5.02%	5.61%
6 Month	3.47%	5.49%	7.33%	8.80%	10.26%	11.63%	12.74%
1 Year	2.33%	3.24%	4.12%	4.09%	3.99%	3.95%	4.10%
2 Year	6.63%	10.22%	13.77%	15.96%	17.31%	18.52%	19.82%
3 Year	4.95%	8.75%	12.64%	15.51%	17.57%	19.71%	22.89%
Since Inception	10.45%	20.80%	31.35%	41.09%	50.44%	59.19%	70.37%



* Figures are generated from inception (11/02/2016) to end Q1 2016

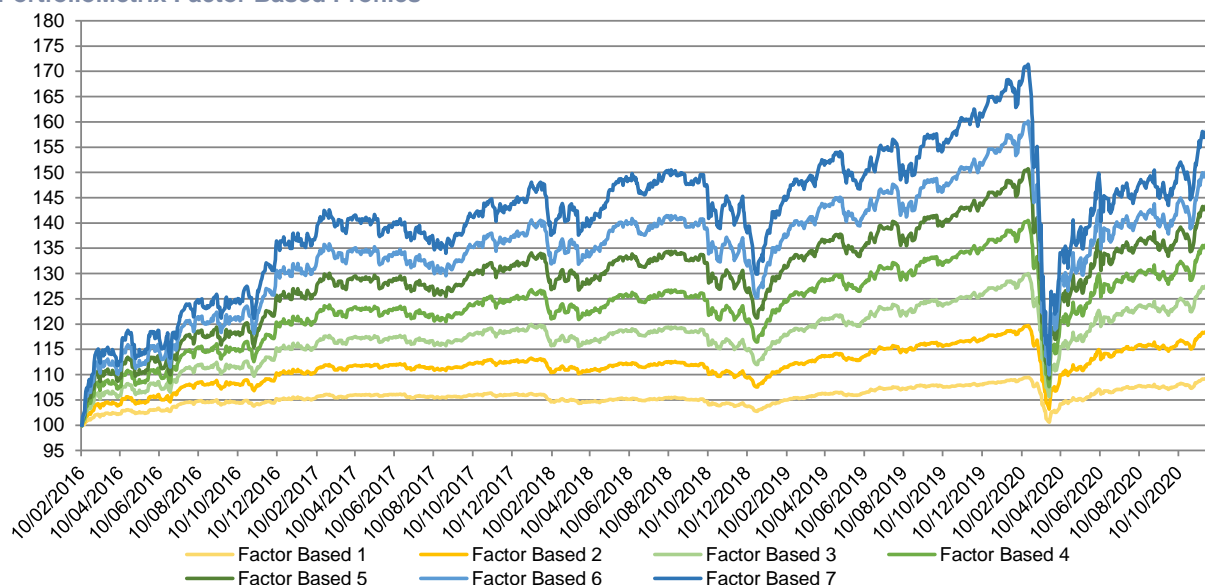
Warning: Past performance is not a reliable indicator of future performance.

Warning: The value of your investments, and any income from them, may go down as well as up and you may lose some or all of the money you invest.

This document is only for professional financial advisers, their clients and their prospective clients. The information given here is for information purposes only and is not intended to constitute financial, legal, tax, investment or other professional advice. It should not be relied upon as such and PortfolioMetrix cannot accept any liability for loss for doing so. Any forecasts, expected future returns or expected future volatilities are not guaranteed and should not be relied upon. **The value of investments, and the income from them, can go down as well as up, and you may not recover the amount of your original investment. Past performance is not a reliable indicator of future performance.** Portfolio holdings and asset allocation can change at any time without notice. PortfolioMetrix Asset Management Ltd is authorised and regulated in the United Kingdom by the Financial Conduct Authority and in Ireland by the Central Bank of Ireland for the Conduct of Business Rules. Full calculation methodology available on request.

PortfolioMetrix, Factor Based Approach (Formerly Enhanced Indexing)

PortfolioMetrix Factor Based Profiles



Source: PortfolioMetrix
 Methodology: Compounded daily total returns, net of asset management fees (inc. fund fees, and PMX fees at 0.55%)
 Portfolios: Investable model portfolios*, based on the PortfolioMetrix factor based, no-tilt approach
 Performance shown since inception, 11/02/2016 (when the 1st Irish client invested)

PortfolioMetrix Factor Based Profiles

Profile Name (Equivalent Portfolio Risk Score)	Risk	Cumulative Return	Annualised Return
Factor Based 1 (PRS 1)	3.12%	9.41%	1.89%
Factor Based 2 (PRS 18)	5.47%	18.69%	3.63%
Factor Based 3 (PRS 33)	7.71%	27.75%	5.23%
Factor Based 4 (PRS 48)	9.95%	35.83%	6.58%
Factor Based 5 (PRS 63)	12.09%	43.42%	7.79%
Factor Based 6 (PRS 78)	14.20%	49.94%	8.79%
Factor Based 7 (PRS 100)	16.44%	57.79%	9.96%

Risk measured as the annualised standard deviation of the weekly total return, 11/02/2016 to 30/11/2020

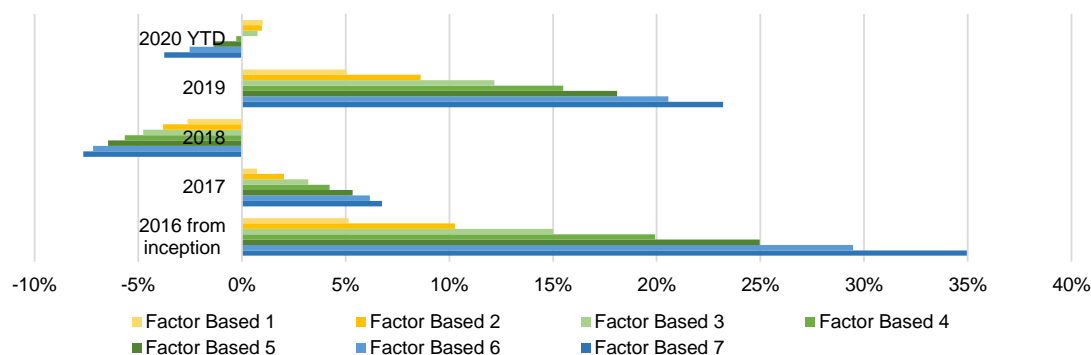
* Models are based on prospectively defined, fully investable targeted risk profiles drawn from a continuum of strategies based on the PMX Factor Based, No-Tilt approach. Investors for whom this approach is suitable are invested across the risk-spectrum according to their specific requirements and not necessarily in the profiles above. Performance reflects the returns of these profiles using fund share classes available on the Conexim platform after all asset management fees (fund TERs, the PortfolioMetrix fee as well as an estimate of fund bid/offer spreads and anti-dilution levies) and assuming fund buys and sales occur on the same day, but does not include advice or platform fees. Returns for clients will depend on their actual platform choice as well as actual model portfolio characteristics including risk target and passive/active tilt preference.

Warning: Past performance is not a reliable indicator of future performance.
Warning: The value of your investments, and any income from them, may go down as well as up and you may lose some or all of the money you invest.

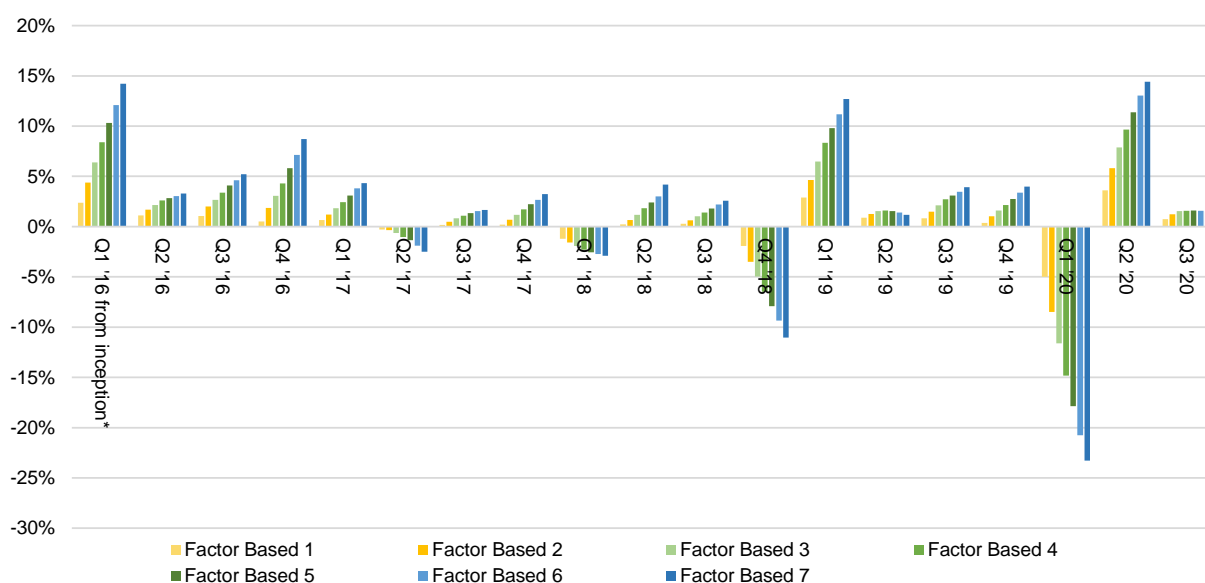
This document is only for professional financial advisers, their clients and their prospective clients. The information given here is for information purposes only and is not intended to constitute financial, legal, tax, investment or other professional advice. It should not be relied upon as such and PortfolioMetrix cannot accept any liability for loss for doing so. Any forecasts, expected future returns or expected future volatilities are not guaranteed and should not be relied upon. **The value of investments, and the income from them, can go down as well as up, and you may not recover the amount of your original investment. Past performance is not a reliable indicator of future performance.** Portfolio holdings and asset allocation can change at any time without notice. PortfolioMetrix Asset Management Ltd is authorised and regulated in the United Kingdom by the Financial Conduct Authority and in Ireland by the Central Bank of Ireland for the Conduct of Business Rules. Full calculation methodology available on request.

PortfolioMetrix - Periodic Performance

PortfolioMetrix Factor Based Profiles



	Profile 1	Profile 2	Profile 3	Profile 4	Profile 5	Profile 6	Profile 7
3 Month	1.65%	2.59%	3.49%	4.29%	5.04%	5.77%	6.53%
6 Month	3.18%	5.12%	6.81%	8.13%	9.44%	10.64%	11.51%
1 Year	1.21%	1.46%	1.49%	0.64%	-0.25%	-1.20%	-2.27%
2 Year	5.03%	7.53%	9.72%	10.53%	10.58%	10.29%	9.59%
3 Year	3.31%	5.63%	7.94%	9.16%	9.63%	9.93%	10.55%
Since Inception	9.41%	18.69%	27.75%	35.83%	43.42%	49.94%	57.79%



* Figures are generated from inception (11/02/2016) to end Q1 2016

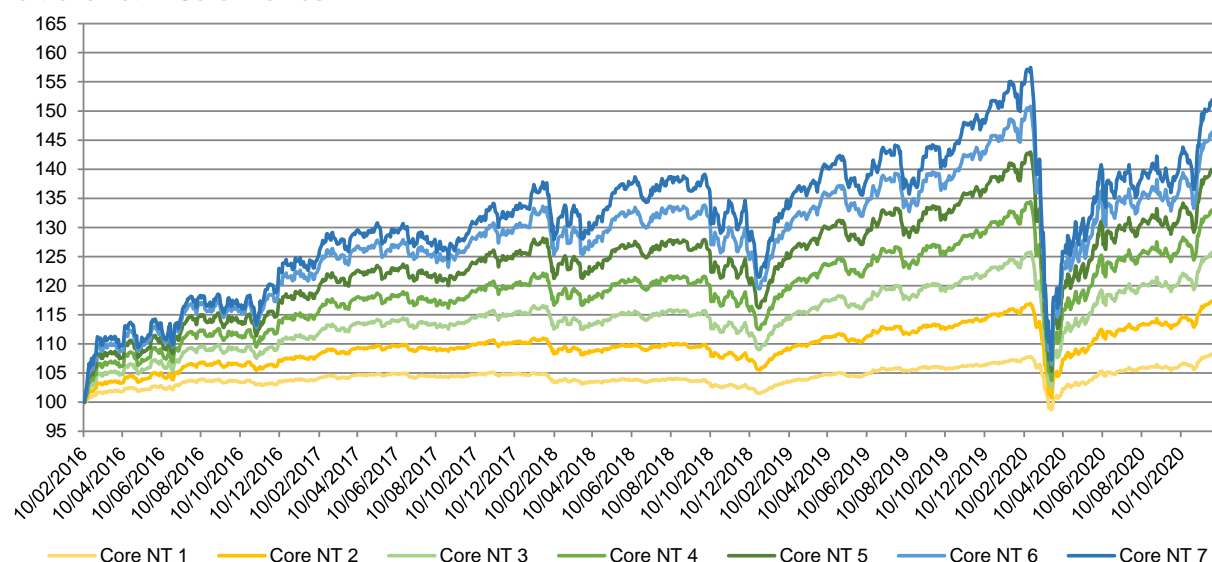
Warning: Past performance is not a reliable indicator of future performance.

Warning: The value of your investments, and any income from them, may go down as well as up and you may lose some or all of the money you invest.

This document is only for professional financial advisers, their clients and their prospective clients. The information given here is for information purposes only and is not intended to constitute financial, legal, tax, investment or other professional advice. It should not be relied upon as such and PortfolioMetrix cannot accept any liability for loss for doing so. Any forecasts, expected future returns or expected future volatilities are not guaranteed and should not be relied upon. **The value of investments, and the income from them, can go down as well as up, and you may not recover the amount of your original investment. Past performance is not a reliable indicator of future performance.** Portfolio holdings and asset allocation can change at any time without notice. PortfolioMetrix Asset Management Ltd is authorised and regulated in the United Kingdom by the Financial Conduct Authority and in Ireland by the Central Bank of Ireland for the Conduct of Business Rules. Full calculation methodology available on request.

PortfolioMetrix, Core Approach

PortfolioMetrix Core Profiles



Source: PortfolioMetrix
 Methodology: Compounded daily total returns, net of asset management fees (inc. fund fees, and PMX fees at 0.55%)
 Portfolios: Investable model portfolios*, based on the PortfolioMetrix Core, no-tilt approach
 Performance shown since inception, 11/02/2016 (when the 1st Irish client invested)

PortfolioMetrix Core Profiles

Profile Name (Equivalent Portfolio Risk Score)	Risk	Cumulative Return	Annualised Return
Core NT 1 (PRS 1)	3.18%	8.10%	1.63%
Core NT 2 (PRS 18)	5.35%	17.06%	3.33%
Core NT 3 (PRS 33)	7.49%	25.28%	4.80%
Core NT 4 (PRS 48)	9.55%	32.33%	6.00%
Core NT 5 (PRS 63)	11.40%	39.06%	7.10%
Core NT 6 (PRS 78)	13.20%	45.27%	8.08%
Core NT 7 (PRS 100)	15.01%	50.52%	8.88%

Risk measured as the annualised standard deviation of the weekly total return, 11/02/2016 to 30/11/2020

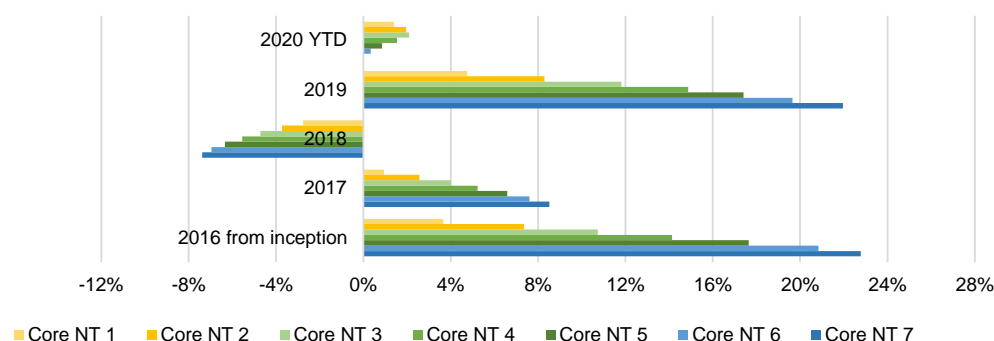
* Models are based on prospectively defined, fully investable targeted risk profiles drawn from a continuum of strategies based on the PMX Core, No-Tilt approach. Investors for whom this approach is suitable are invested across the risk-spectrum according to their specific requirements and not necessarily in the profiles above. Performance reflects the returns of these profiles using fund share classes available on the Conexim platform after all asset management fees (fund TERs, the PortfolioMetrix fee as well as an estimate of fund bid/offer spreads and anti-dilution levies) and assuming fund buys and sales occur on the same day, but does not include advice or platform fees. Returns for clients will depend on their actual platform choice as well as actual model portfolio characteristics including risk target and passive/active tilt preference.

Warning: Past performance is not a reliable indicator of future performance.
Warning: The value of your investments, and any income from them, may go down as well as up and you may lose some or all of the money you invest.

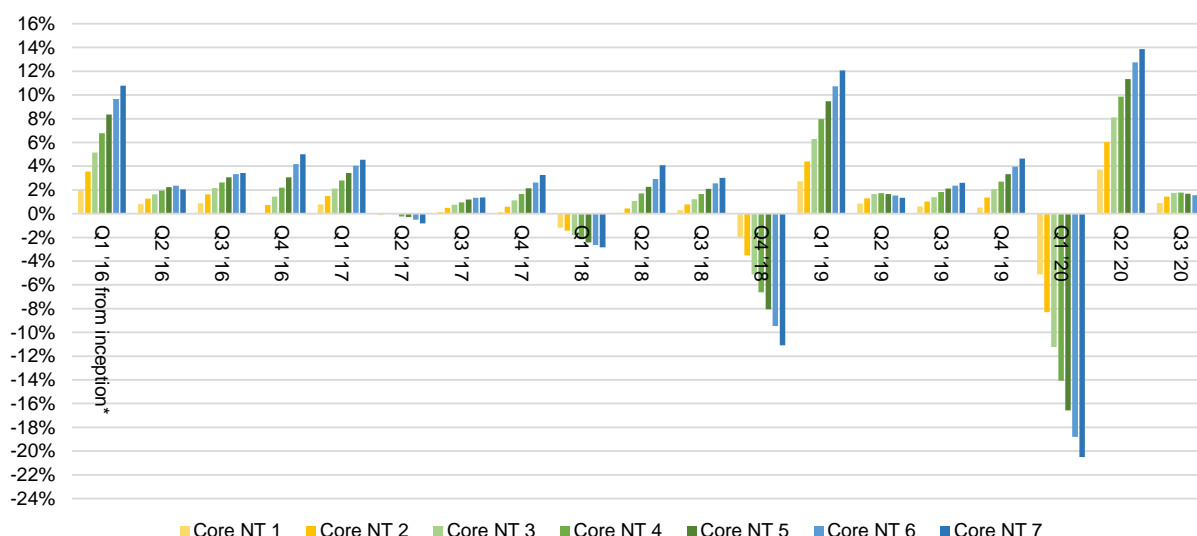
This document is only for professional financial advisers, their clients and their prospective clients. The information given here is for information purposes only and is not intended to constitute financial, legal, tax, investment or other professional advice. It should not be relied upon as such and PortfolioMetrix cannot accept any liability for loss for doing so. Any forecasts, expected future returns or expected future volatilities are not guaranteed and should not be relied upon. **The value of investments, and the income from them, can go down as well as up, and you may not recover the amount of your original investment. Past performance is not a reliable indicator of future performance.** Portfolio holdings and asset allocation can change at any time without notice. PortfolioMetrix Asset Management Ltd is authorised and regulated in the United Kingdom by the Financial Conduct Authority and in Ireland by the Central Bank of Ireland for the Conduct of Business Rules. Full calculation methodology available on request.

PortfolioMetrix - Periodic Performance

PortfolioMetrix Core Profiles



	Profile 1	Profile 2	Profile 3	Profile 4	Profile 5	Profile 6	Profile 7
3 Month	1.95%	2.99%	3.98%	4.87%	5.69%	6.60%	7.51%
6 Month	3.66%	5.72%	7.51%	8.89%	10.10%	11.30%	12.17%
1 Year	1.59%	2.45%	2.79%	2.37%	1.79%	1.40%	1.13%
2 Year	5.22%	8.38%	10.90%	12.12%	12.67%	13.06%	13.27%
3 Year	3.22%	6.37%	9.03%	10.59%	11.49%	12.45%	13.88%
Since Inception	8.10%	17.06%	25.28%	32.33%	39.06%	45.27%	50.52%



* Figures are generated from inception (11/02/2016) to end Q1 2016

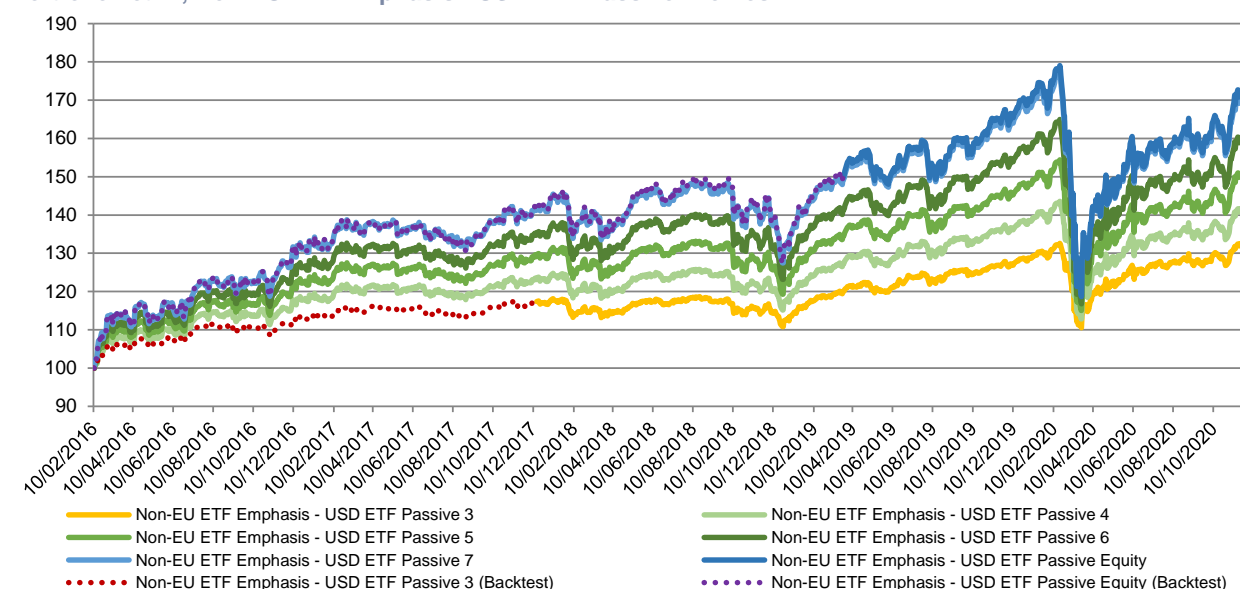
Warning: Past performance is not a reliable indicator of future performance.

Warning: The value of your investments, and any income from them, may go down as well as up and you may lose some or all of the money you invest.

This document is only for professional financial advisers, their clients and their prospective clients. The information given here is for information purposes only and is not intended to constitute financial, legal, tax, investment or other professional advice. It should not be relied upon as such and PortfolioMetrix cannot accept any liability for loss for doing so. Any forecasts, expected future returns or expected future volatilities are not guaranteed and should not be relied upon. **The value of investments, and the income from them, can go down as well as up, and you may not recover the amount of your original investment. Past performance is not a reliable indicator of future performance.** Portfolio holdings and asset allocation can change at any time without notice. PortfolioMetrix Asset Management Ltd is authorised and regulated in the United Kingdom by the Financial Conduct Authority and in Ireland by the Central Bank of Ireland for the Conduct of Business Rules. Full calculation methodology available on request.

PortfolioMetrix, Non-EU ETF Emphasis - USD ETF Passive Approach

PortfolioMetrix, Non-EU ETF Emphasis - USD ETF Passive Profiles



PortfolioMetrix, Non-EU ETF Emphasis - USD ETF Passive Profiles

Profile Name (Equivalent Portfolio Risk Score)	Risk	Cumulative Return	Annualised Return
Non-EU ETF Emphasis - USD ETF Passive 3 (PRS 33)	7.62%	32.54%	6.04%
Non-EU ETF Emphasis - USD ETF Passive 4 (PRS 48)	9.88%	41.46%	7.48%
Non-EU ETF Emphasis - USD ETF Passive 5 (PRS 63)	12.06%	50.63%	8.90%
Non-EU ETF Emphasis - USD ETF Passive 6 (PRS 78)	14.17%	59.81%	10.25%
Non-EU ETF Emphasis - USD ETF Passive 7 (PRS 100)	16.33%	70.25%	11.71%
Non-EU ETF Emphasis - USD ETF Passive Equity	16.92%	71.93%	11.94%

Risk measured as the annualised standard deviation of the weekly total return, 11/02/2016 to 30/11/2020

* Models are based on prospectively defined, fully investable targeted risk profiles drawn from a continuum of strategies based on the PM Standard Non-EU ETF Emphasis, USD ETF Passive approach. Actual investors for whom this approach is suitable are those who are invested across the risk-spectrum according to their specific requirements and not necessarily in the profiles above. Performance reflects the returns of these profiles using fund share classes available on the Conexim platform after all asset management fees (fund TERs, the PortfolioMetrix fee as well as an estimate of the fund bid/offer spreads and anti-dilution levies) and assuming fund buys and sales occur on the same day, but does not include advice or platform fees. Returns for clients will depend on their actual platform choice as well as actual model portfolio characteristics including risk target and passive/active tilt preference.

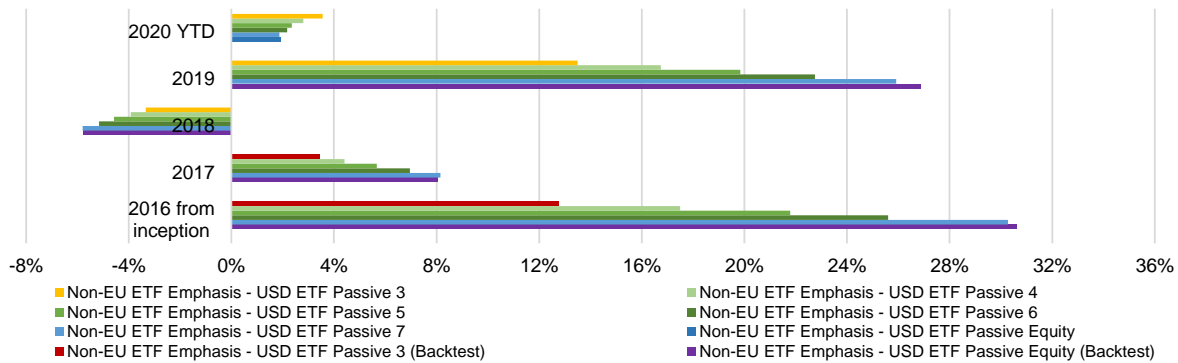
Warning: Past performance is not a reliable indicator of future performance.

Warning: The value of your investments, and any income from them, may go down as well as up and you may lose some or all of the money you invest.

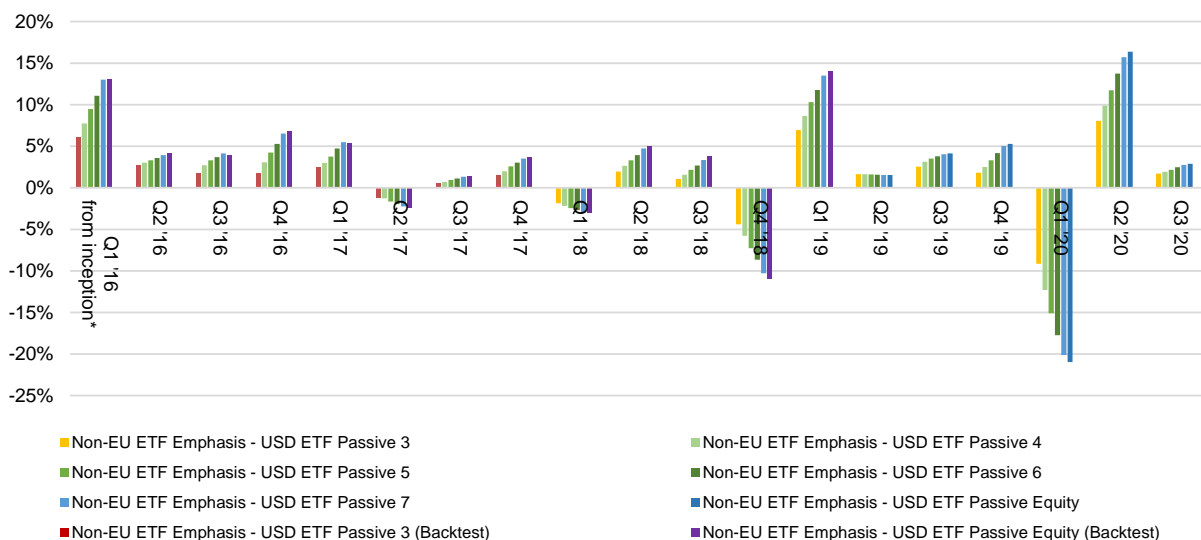
This document is only for professional financial advisers, their clients and their prospective clients. The information given here is for information purposes only and is not intended to constitute financial, legal, tax, investment or other professional advice. It should not be relied upon as such and PortfolioMetrix cannot accept any liability for loss for doing so. Any forecasts, expected future returns or expected future volatilities are not guaranteed and should not be relied upon. **The value of investments, and the income from them, can go down as well as up, and you may not recover the amount of your original investment. Past performance is not a reliable indicator of future performance.** Portfolio holdings and asset allocation can change at any time without notice. PortfolioMetrix Asset Management Ltd is authorised and regulated in the United Kingdom by the Financial Conduct Authority and in Ireland by the Central Bank of Ireland for the Conduct of Business Rules. Full calculation methodology available on request.

PortfolioMetrix - Periodic Performance

PortfolioMetrix, Non-EU ETF Emphasis - USD ETF Passive Profiles



	USD ETF Pass 3	USD ETF Pass 4	USD ETF Pass 5	USD ETF Pass 6	USD ETF Pass 7	USD ETF Pass Equity
3 Month	3.54%	4.34%	5.12%	5.90%	6.48%	6.81%
6 Month	6.84%	8.29%	9.80%	11.38%	12.67%	13.30%
1 Year	4.10%	3.53%	3.31%	3.42%	3.39%	3.52%
2 Year	14.05%	15.26%	16.46%	17.81%	18.92%	19.31%
Since Inception	32.54%	41.46%	50.63%	59.81%	70.25%	71.93%



* Figures are generated from inception (11/02/2016) to end Q1 2016

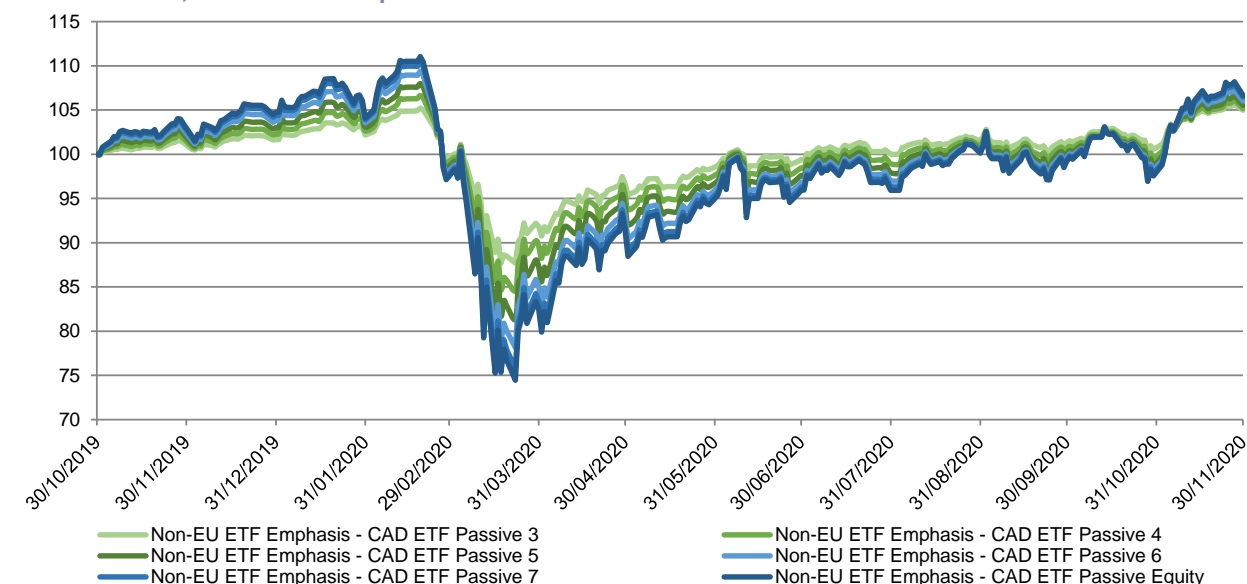
Warning: Past performance is not a reliable indicator of future performance.

Warning: The value of your investments, and any income from them, may go down as well as up and you may lose some or all of the money you invest.

This document is only for professional financial advisers, their clients and their prospective clients. The information given here is for information purposes only and is not intended to constitute financial, legal, tax, investment or other professional advice. It should not be relied upon as such and PortfolioMetrix cannot accept any liability for loss for doing so. Any forecasts, expected future returns or expected future volatilities are not guaranteed and should not be relied upon. **The value of investments, and the income from them, can go down as well as up, and you may not recover the amount of your original investment. Past performance is not a reliable indicator of future performance.** Portfolio holdings and asset allocation can change at any time without notice. PortfolioMetrix Asset Management Ltd is authorised and regulated in the United Kingdom by the Financial Conduct Authority and in Ireland by the Central Bank of Ireland for the Conduct of Business Rules. Full calculation methodology available on request.

PortfolioMetrix, Non-EU ETF Emphasis - CAD ETF Passive Approach

PortfolioMetrix, Non-EU ETF Emphasis - CAD ETF Passive Profiles



PortfolioMetrix, Non-EU ETF Emphasis - CAD ETF Passive Profiles

Profile Name (Equivalent Portfolio Risk Score)	Risk	Cumulative Return	Annualised Return
Non-EU ETF Emphasis - CAD ETF Passive 3 (PRS 33)	12.82%	4.98%	4.58%
Non-EU ETF Emphasis - CAD ETF Passive 4 (PRS 48)	16.29%	5.17%	4.75%
Non-EU ETF Emphasis - CAD ETF Passive 5 (PRS 63)	19.78%	5.52%	5.08%
Non-EU ETF Emphasis - CAD ETF Passive 6 (PRS 78)	23.42%	6.03%	5.54%
Non-EU ETF Emphasis - CAD ETF Passive 7 (PRS 100)	26.21%	6.47%	5.95%
Non-EU ETF Emphasis - CAD ETF Passive Equity	27.82%	6.69%	6.15%

Risk measured as the annualised standard deviation of the weekly total return, 31/10/2019 to 30/11/2020

* Models are based on prospectively defined, fully investable targeted risk profiles drawn from a continuum of strategies based on the PM Standard Non-EU ETF Emphasis, CAD ETF Passive approach. Actual investors for whom this approach is suitable are invested across the risk-spectrum according to their specific requirements and not necessarily in the profiles above. Performance reflects the returns of these profiles using fund share classes available on the Conexim platform after all asset management fees (fund TERs, the PortfolioMetrix fee as well as an estimate of the fund bid/offer spreads and anti-dilution levies) and assuming fund buys and sales occur on the same day, but does not include advice or platform fees. Returns for clients will depend on their actual platform choice as well as actual model portfolio characteristics including risk target and passive/active tilt preference.

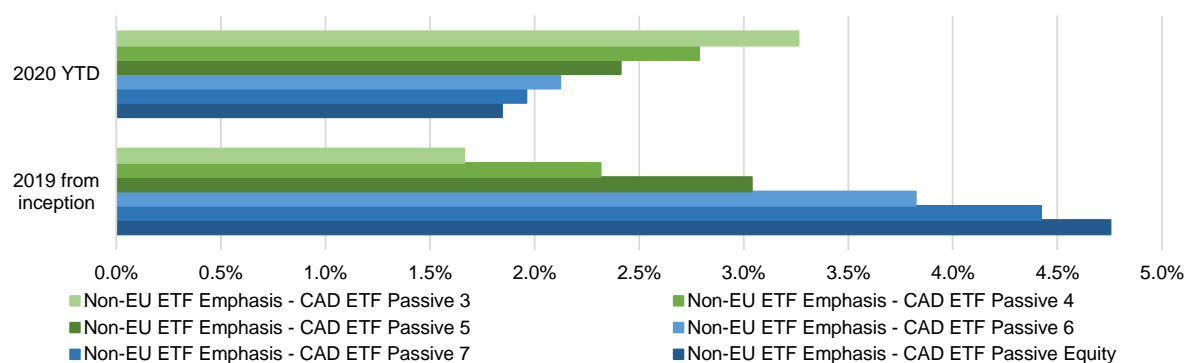
Warning: Past performance is not a reliable indicator of future performance.

Warning: The value of your investments, and any income from them, may go down as well as up and you may lose some or all of the money you invest.

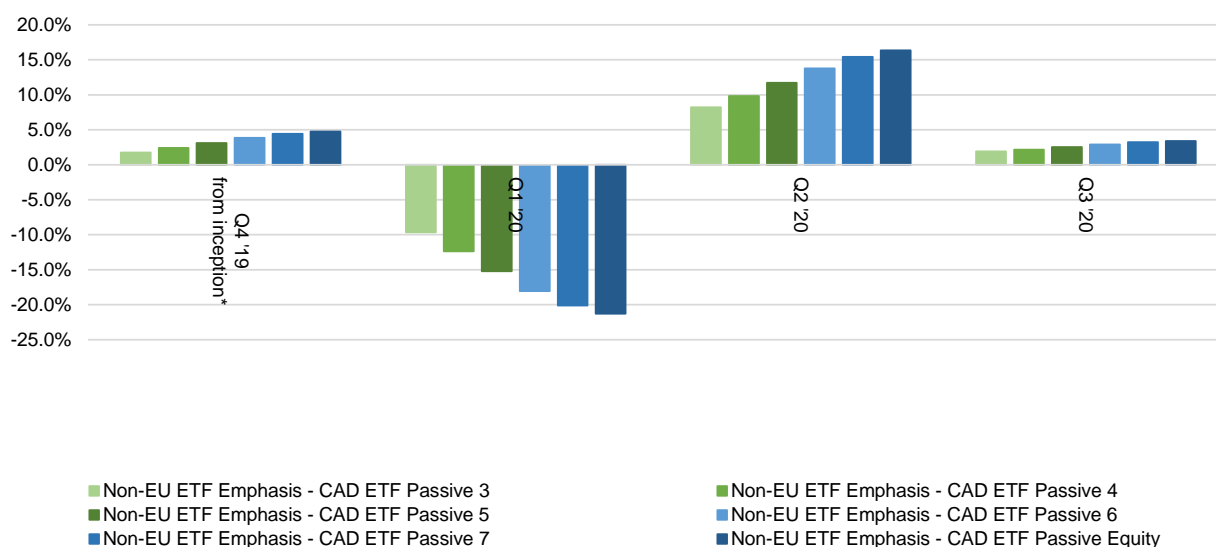
This document is only for professional financial advisers, their clients and their prospective clients. The information given here is for information purposes only and is not intended to constitute financial, legal, tax, investment or other professional advice. It should not be relied upon as such and PortfolioMetrix cannot accept any liability for loss for doing so. Any forecasts, expected future returns or expected future volatilities are not guaranteed and should not be relied upon. **The value of investments, and the income from them, can go down as well as up, and you may not recover the amount of your original investment. Past performance is not a reliable indicator of future performance.** Portfolio holdings and asset allocation can change at any time without notice. PortfolioMetrix Asset Management Ltd is authorised and regulated in the United Kingdom by the Financial Conduct Authority and in Ireland by the Central Bank of Ireland for the Conduct of Business Rules. Full calculation methodology available on request.

PortfolioMetrix - Periodic Performance

PortfolioMetrix, Non-EU ETF Emphasis - CAD ETF Passive Profiles



	CAD ETF Pass 3	CAD ETF Pass 4	CAD ETF Pass 5	CAD ETF Pass 6	CAD ETF Pass 7	CAD ETF Pass Equity
3 Month	3.43%	4.14%	4.87%	5.64%	6.22%	6.55%
6 Month	6.83%	8.11%	9.60%	11.20%	12.44%	13.13%
1 Year	3.64%	3.33%	3.18%	3.13%	3.16%	3.14%
Since Inception	4.98%	5.17%	5.52%	6.03%	6.47%	6.69%



* Figures are generated from inception (31/10/2019) to end Q4 2019

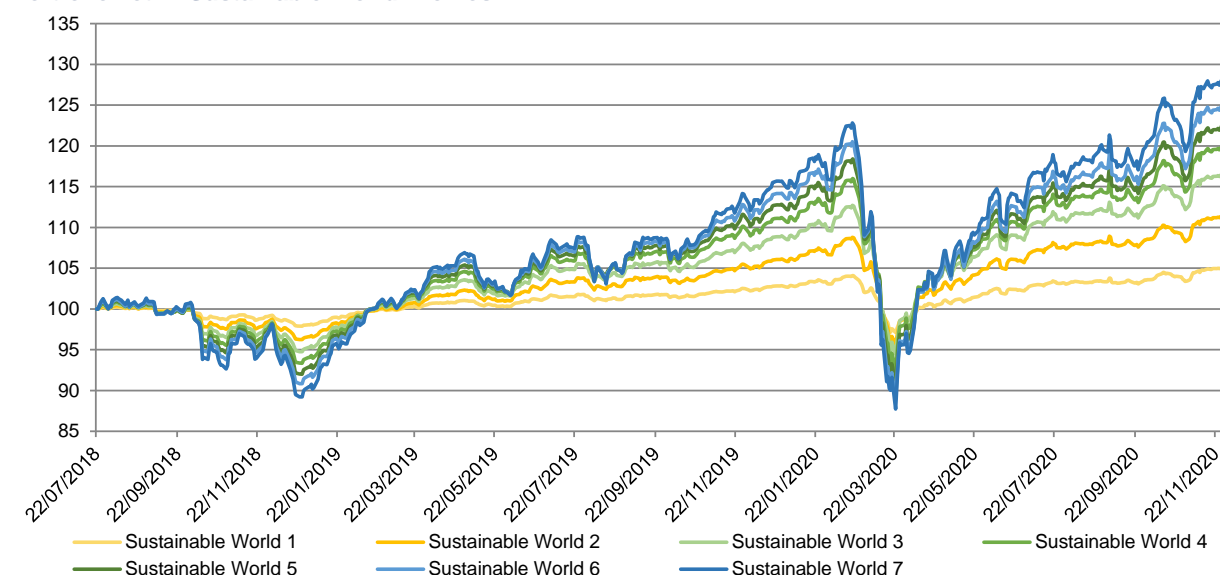
Warning: Past performance is not a reliable indicator of future performance.

Warning: The value of your investments, and any income from them, may go down as well as up and you may lose some or all of the money you invest.

This document is only for professional financial advisers, their clients and their prospective clients. The information given here is for information purposes only and is not intended to constitute financial, legal, tax, investment or other professional advice. It should not be relied upon as such and PortfolioMetrix cannot accept any liability for loss for doing so. Any forecasts, expected future returns or expected future volatilities are not guaranteed and should not be relied upon. **The value of investments, and the income from them, can go down as well as up, and you may not recover the amount of your original investment. Past performance is not a reliable indicator of future performance.** Portfolio holdings and asset allocation can change at any time without notice. PortfolioMetrix Asset Management Ltd is authorised and regulated in the United Kingdom by the Financial Conduct Authority and in Ireland by the Central Bank of Ireland for the Conduct of Business Rules. Full calculation methodology available on request.

PortfolioMetrix, Sustainable World (formerly Ethical Emphasis) Approach

PortfolioMetrix Sustainable World Profiles



Source: PortfolioMetrix
 Methodology: Compounded daily total returns, net of asset management fees (inc. fund fees, and PMX fees at 0.55%)
 Portfolios: Investable model portfolios*, based on the PortfolioMetrix Sustainable World approach
 Performance shown since inception, 23/07/2018 (when the 1st Irish client invested)

PortfolioMetrix Sustainable World Profiles

Profile Name (Equivalent Portfolio Risk Score)	Risk	Cumulative Return	Annualised Return
Sustainable World 1 (PRS 1)	3.28%	5.04%	2.11%
Sustainable World 2 (PRS 18)	6.21%	11.36%	4.67%
Sustainable World 3 (PRS 33)	8.65%	16.47%	6.68%
Sustainable World 4 (PRS 48)	11.12%	19.79%	7.95%
Sustainable World 5 (PRS 63)	13.30%	22.23%	8.88%
Sustainable World 6 (PRS 78)	15.34%	24.69%	9.81%
Sustainable World 7 (PRS 100)	17.53%	27.85%	10.98%

Risk measured as the annualised standard deviation of the weekly total return, 23/07/2018 to 30/11/2020

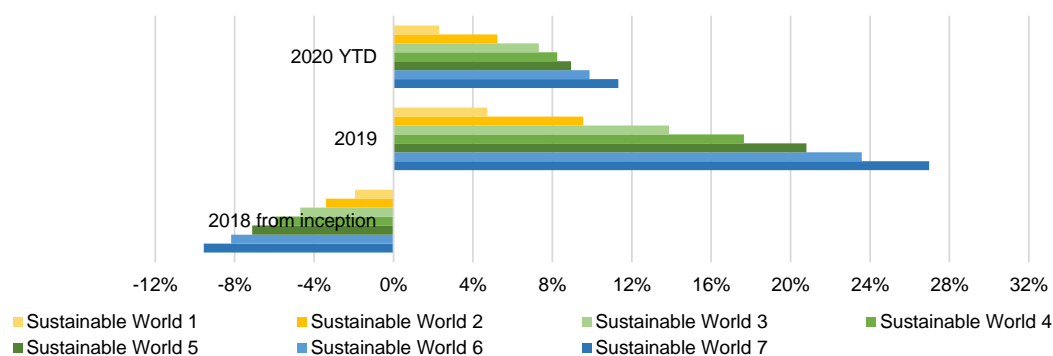
* Models are based on prospectively defined, fully investable targeted risk profiles drawn from a continuum of strategies based on the PMX Sustainable World, No-Tilt approach. Investors for whom this approach is suitable are invested across the risk-spectrum according to their specific requirements and not necessarily in the profiles above. Performance reflects the returns of these profiles using fund share classes available on the Conexim platform after all asset management fees (fund TERs, the PortfolioMetrix fee as well as an estimate of fund bid/offer spreads and anti-dilution levies) and assuming fund buys and sales occur on the same day, but does not include advice or platform fees. Returns for clients will depend on their actual platform choice as well as actual model portfolio characteristics including risk target and passive/active tilt preference.

Warning: Past performance is not a reliable indicator of future performance.
Warning: The value of your investments, and any income from them, may go down as well as up and you may lose some or all of the money you invest.

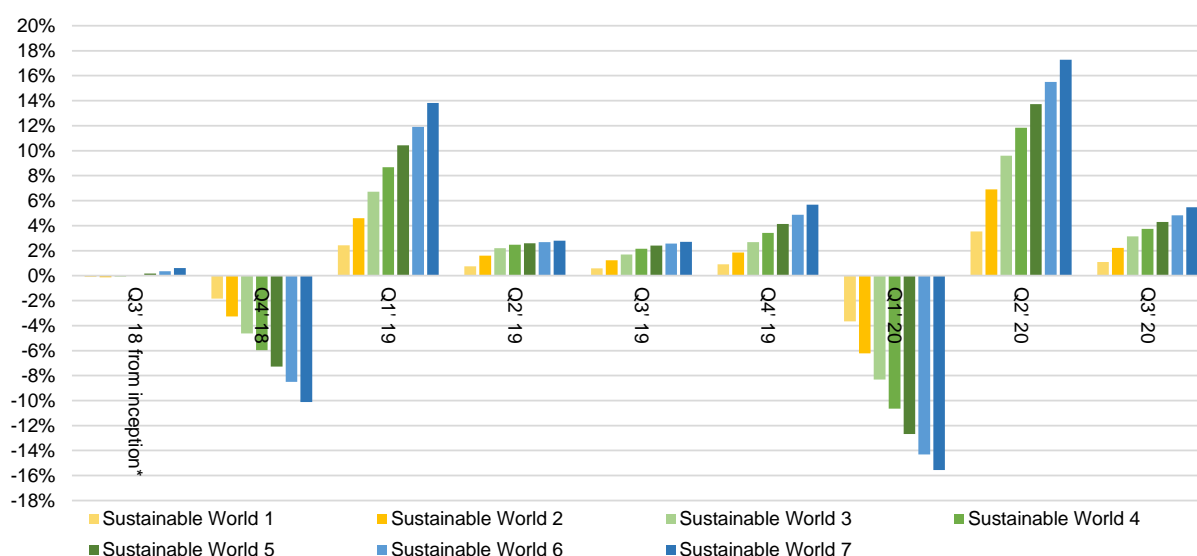
This document is only for professional financial advisers, their clients and their prospective clients. The information given here is for information purposes only and is not intended to constitute financial, legal, tax, investment or other professional advice. It should not be relied upon as such and PortfolioMetrix cannot accept any liability for loss for doing so. Any forecasts, expected future returns or expected future volatilities are not guaranteed and should not be relied upon. **The value of investments, and the income from them, can go down as well as up, and you may not recover the amount of your original investment. Past performance is not a reliable indicator of future performance.** Portfolio holdings and asset allocation can change at any time without notice. PortfolioMetrix Asset Management Ltd is authorised and regulated in the United Kingdom by the Financial Conduct Authority and in Ireland by the Central Bank of Ireland for the Conduct of Business Rules. Full calculation methodology available on request.

PortfolioMetrix - Periodic Performance

PortfolioMetrix Sustainable World Profiles



	Profile 1	Profile 2	Profile 3	Profile 4	Profile 5	Profile 6	Profile 7
3 Month	1.64%	3.01%	4.02%	4.86%	5.62%	6.38%	7.20%
6 Month	3.11%	6.14%	8.45%	10.33%	12.02%	13.63%	15.23%
1 Year	2.49%	5.65%	7.93%	8.97%	9.80%	10.87%	12.40%
2 Year	6.00%	13.13%	18.86%	22.67%	25.59%	28.38%	31.80%
3 Year	-	-	-	-	-	-	-
Since Inception	5.04%	11.36%	16.47%	19.79%	22.23%	24.69%	27.85%



* Figures are generated from inception (23/07/2018) to end Q3 2018

Warning: Past performance is not a reliable indicator of future performance.

Warning: The value of your investments, and any income from them, may go down as well as up and you may lose some or all of the money you invest.

This document is only for professional financial advisers, their clients and their prospective clients. The information given here is for information purposes only and is not intended to constitute financial, legal, tax, investment or other professional advice. It should not be relied upon as such and PortfolioMetrix cannot accept any liability for loss for doing so. Any forecasts, expected future returns or expected future volatilities are not guaranteed and should not be relied upon. **The value of investments, and the income from them, can go down as well as up, and you may not recover the amount of your original investment. Past performance is not a reliable indicator of future performance.** Portfolio holdings and asset allocation can change at any time without notice. PortfolioMetrix Asset Management Ltd is authorised and regulated in the United Kingdom by the Financial Conduct Authority and in Ireland by the Central Bank of Ireland for the Conduct of Business Rules. Full calculation methodology available on request.